

Area Percent Report

Data Path : D:\GCMS Daten\140912\
 Data File : cp-daI-001-1-2.D
 Acq On : 12 Sep 2014 10:15
 Operator : JD
 Sample : cp-daI-001-1-2
 Misc :
 ALS Vial : 11 Sample Multiplier: 1

Integration Parameters: autoint1.e
 Integrator: ChemStation

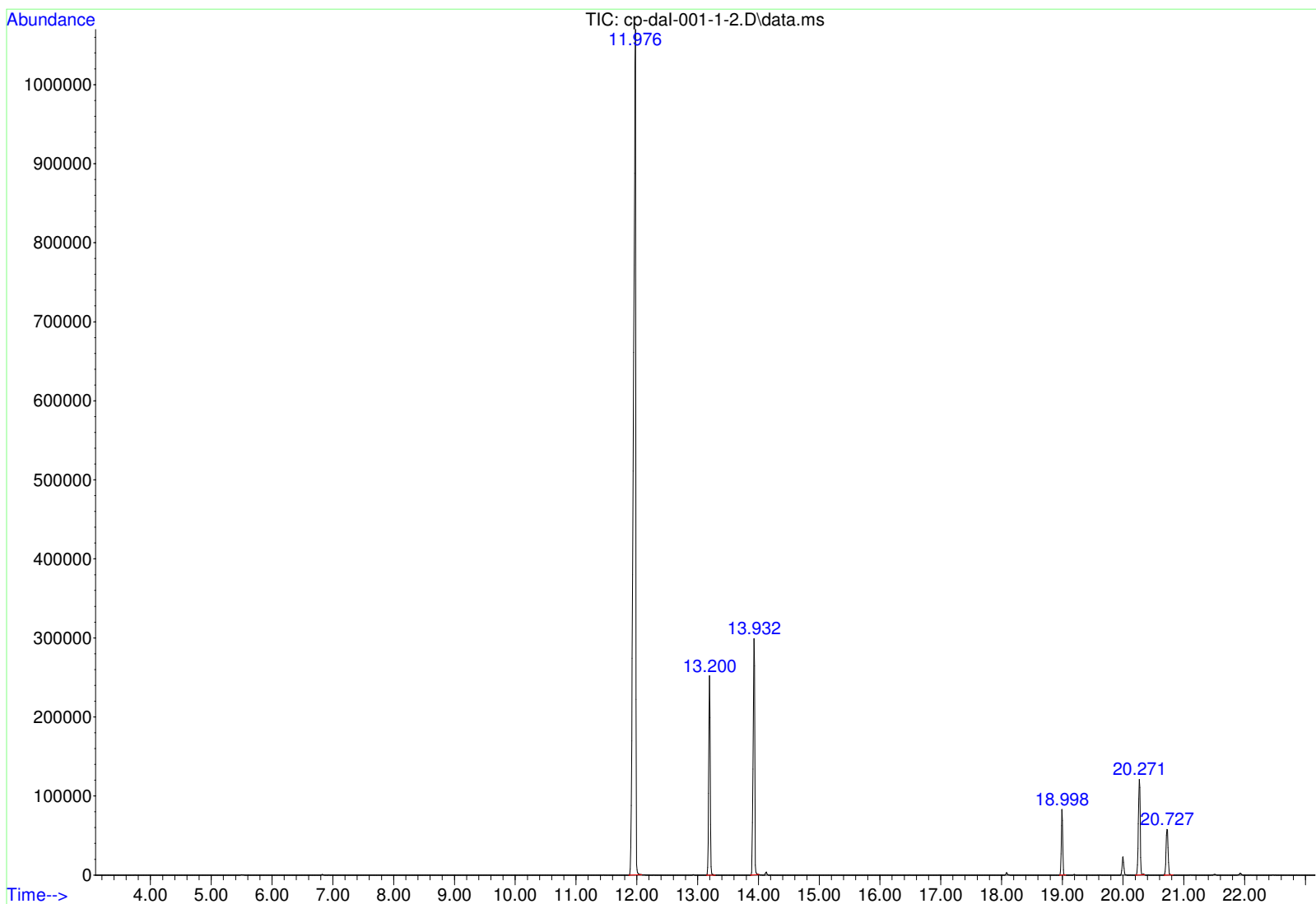
Method : D:\GCMS Daten\140901\ocwmm06roh.D\STANDARD.M
 Title :

Signal : TIC: cp-daI-001-1-2.D\data.ms

peak #	R.T. min	first scan	max scan	last scan	PK TY	peak height	corr. area	corr. % max.	% of total
1	11.976	1118	1132	1143	BB	1044123	28896766	100.00%	66.465%
2	13.200	1281	1287	1298	BB	242597	4114411	14.24%	9.464%
3	13.932	1373	1381	1390	BB	292258	5297082	18.33%	12.184%
4	18.998	2020	2026	2031	BB	80468	1355285	4.69%	3.117%
5	20.271	2179	2188	2198	BB	118666	2532111	8.76%	5.824%
6	20.727	2239	2246	2256	BB 2	57869	1280977	4.43%	2.946%

Sum of corrected areas: 43476632

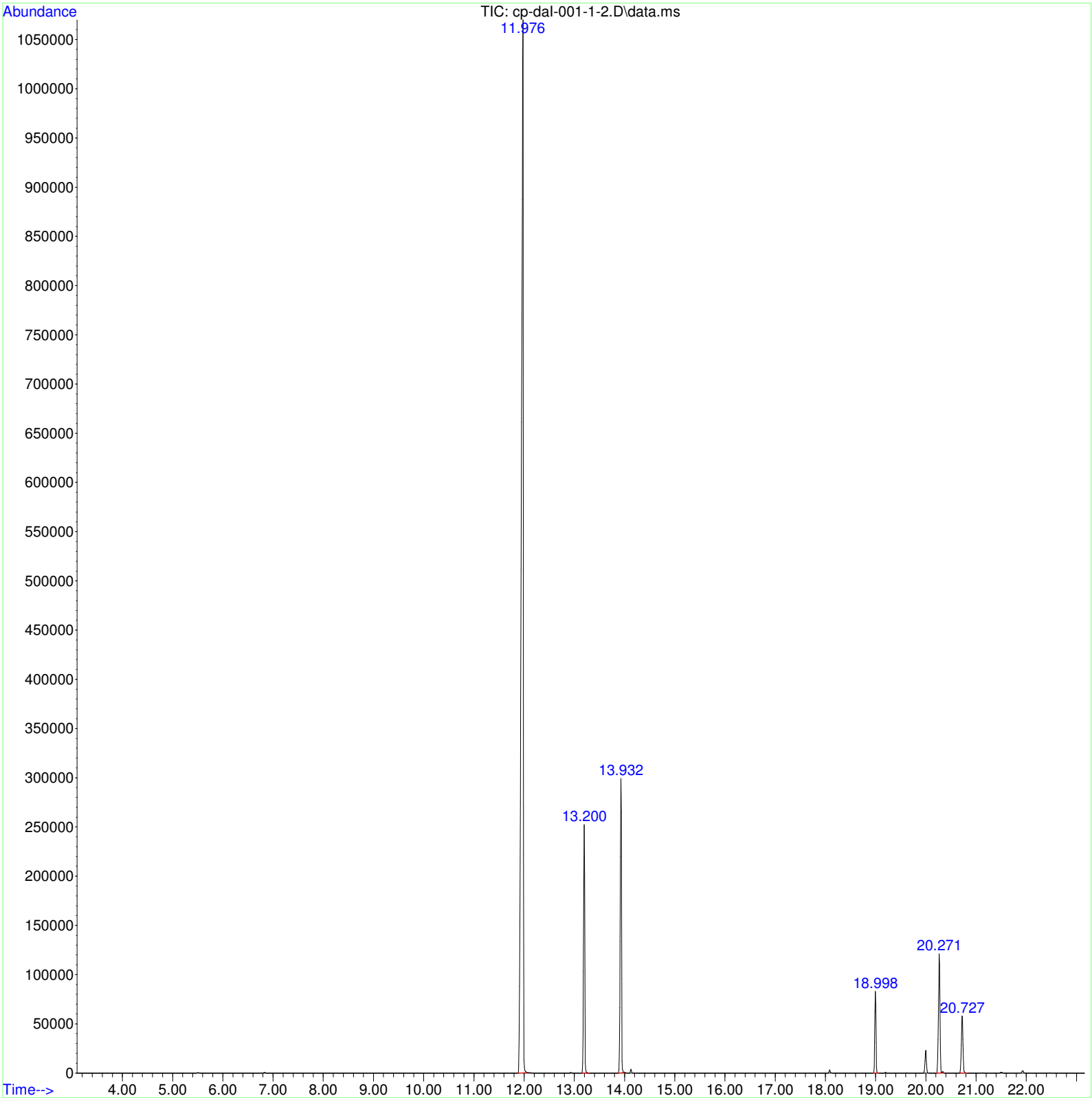
STANDARD.M Fri Sep 12 10:45:02 2014 GCMS



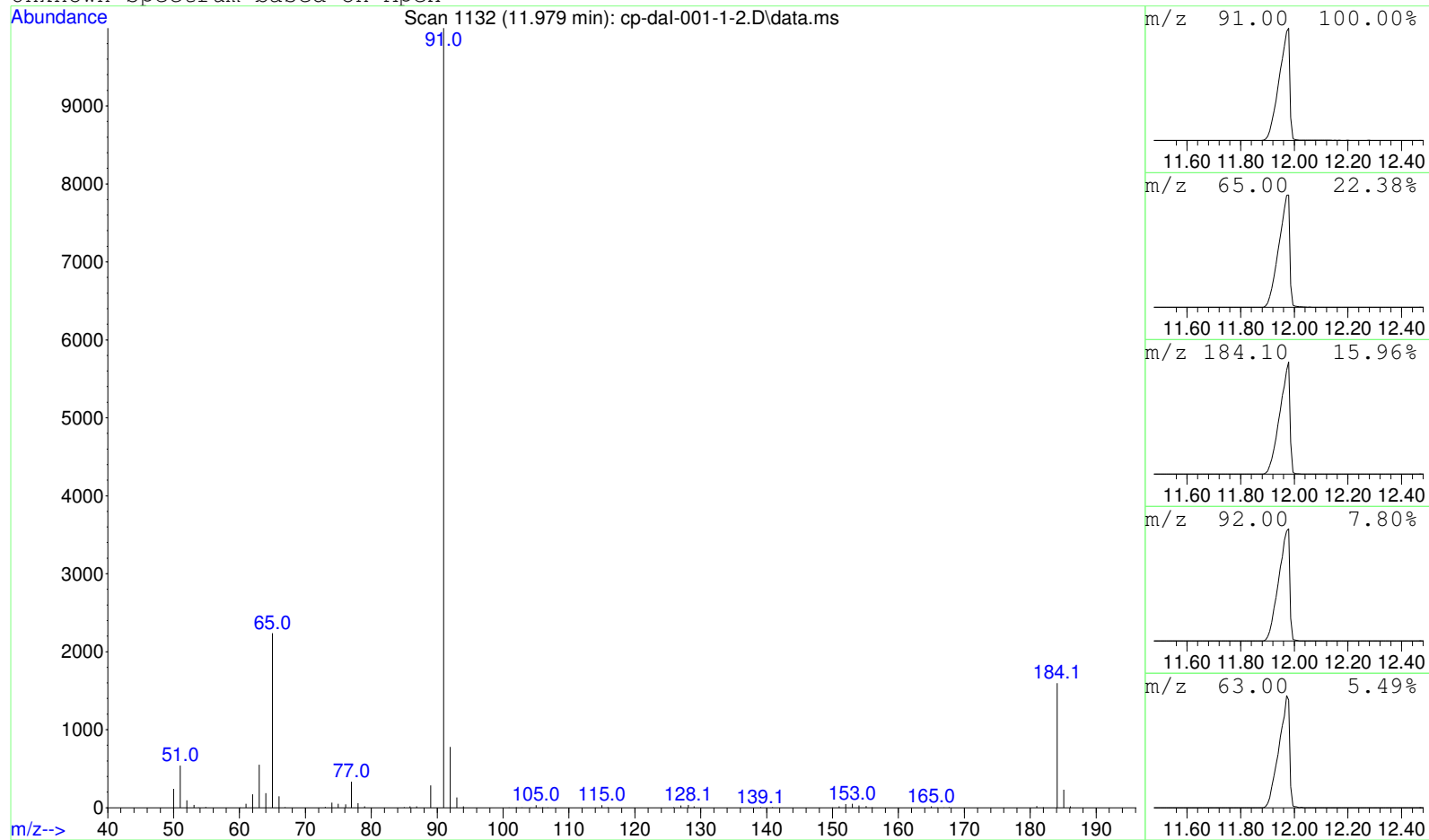
Data Path : D:\GCMS Daten\140912\
Data File : cp-daI-001-1-2.D
Acq On : 12 Sep 2014 10:15
Operator : JD
Sample : cp-daI-001-1-2
Misc :
ALS Vial : 11 Sample Multiplier: 1

Search Libraries: C:\DATABASE\DEMO.L Minimum Quality: 0

Unknown Spectrum: Apex
Integration Events: ChemStation Integrator - autoint1.e



Unknown Spectrum based on Apex



Data File: D:\GCMS Daten\140912\cp-daI-001-1-2.D

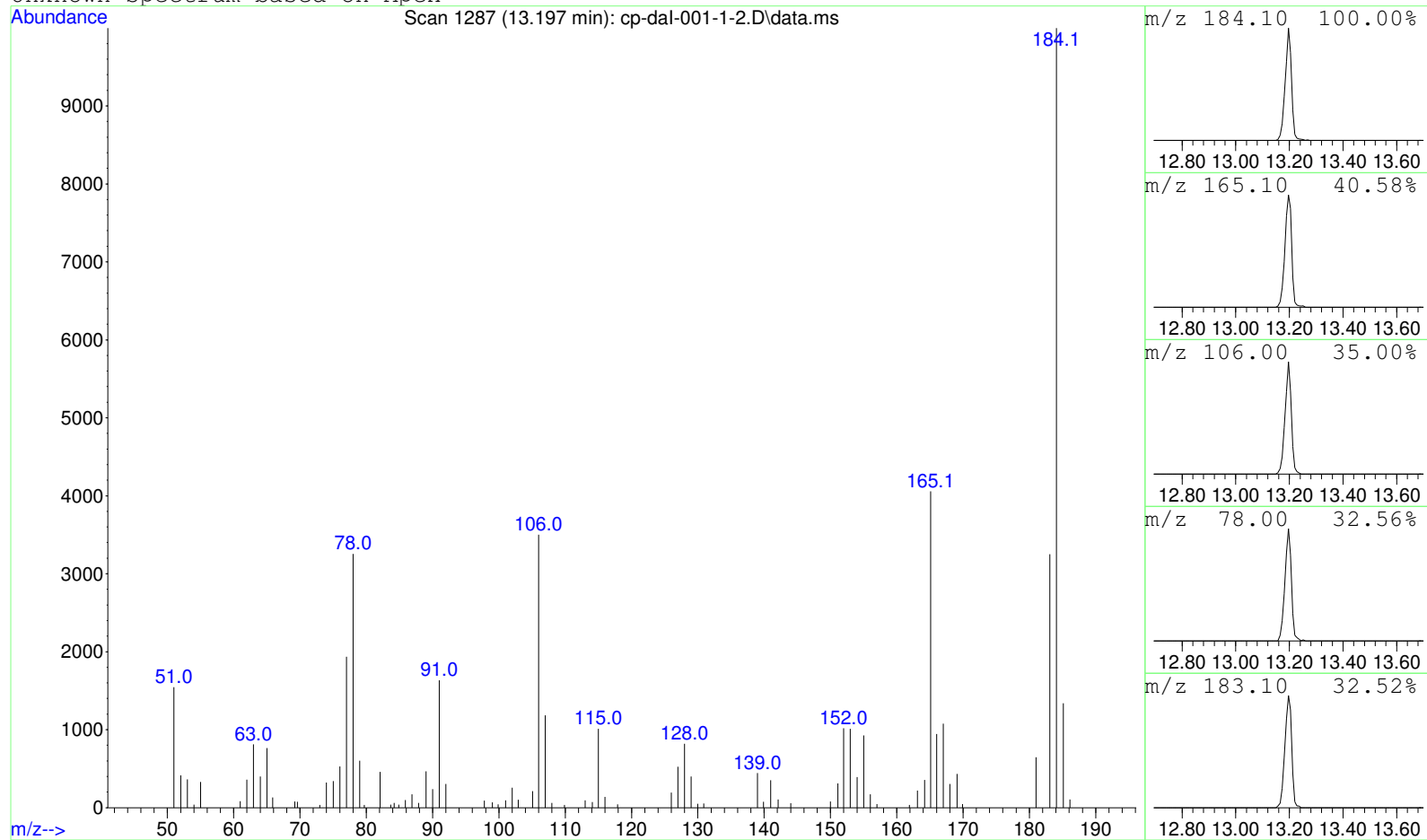
Sample : cp-daI-001-1-2

Peak Number: 1 at 11.979 min Area: 28896766 Area % 66.47

The 3 best hits from each library. Ref\# CAS\# Qual

C:\DATABASE\DEMO.L No hits were retrieved.

Unknown Spectrum based on Apex



Data File: D:\GCMS Daten\140912\cp-daI-001-1-2.D

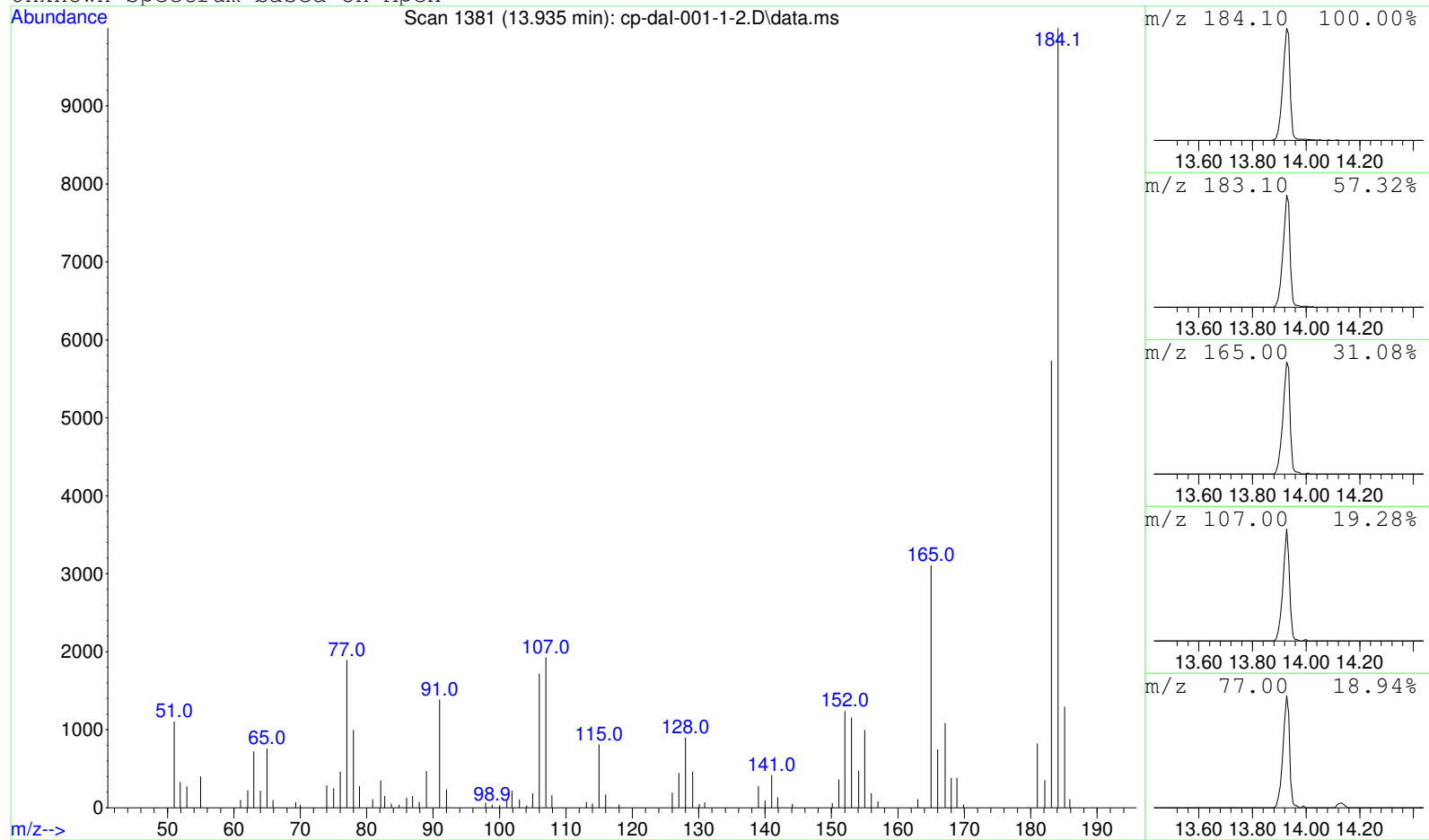
Sample : cp-daI-001-1-2

Peak Number: 2 at 13.197 min Area: 4114411 Area % 9.46

The 3 best hits from each library. Ref\# CAS\# Qual

C:\DATABASE\DEMO.L No hits were retrieved.

Unknown Spectrum based on Apex



Data File: D:\GCMS Daten\140912\cp-daI-001-1-2.D

Sample : cp-daI-001-1-2

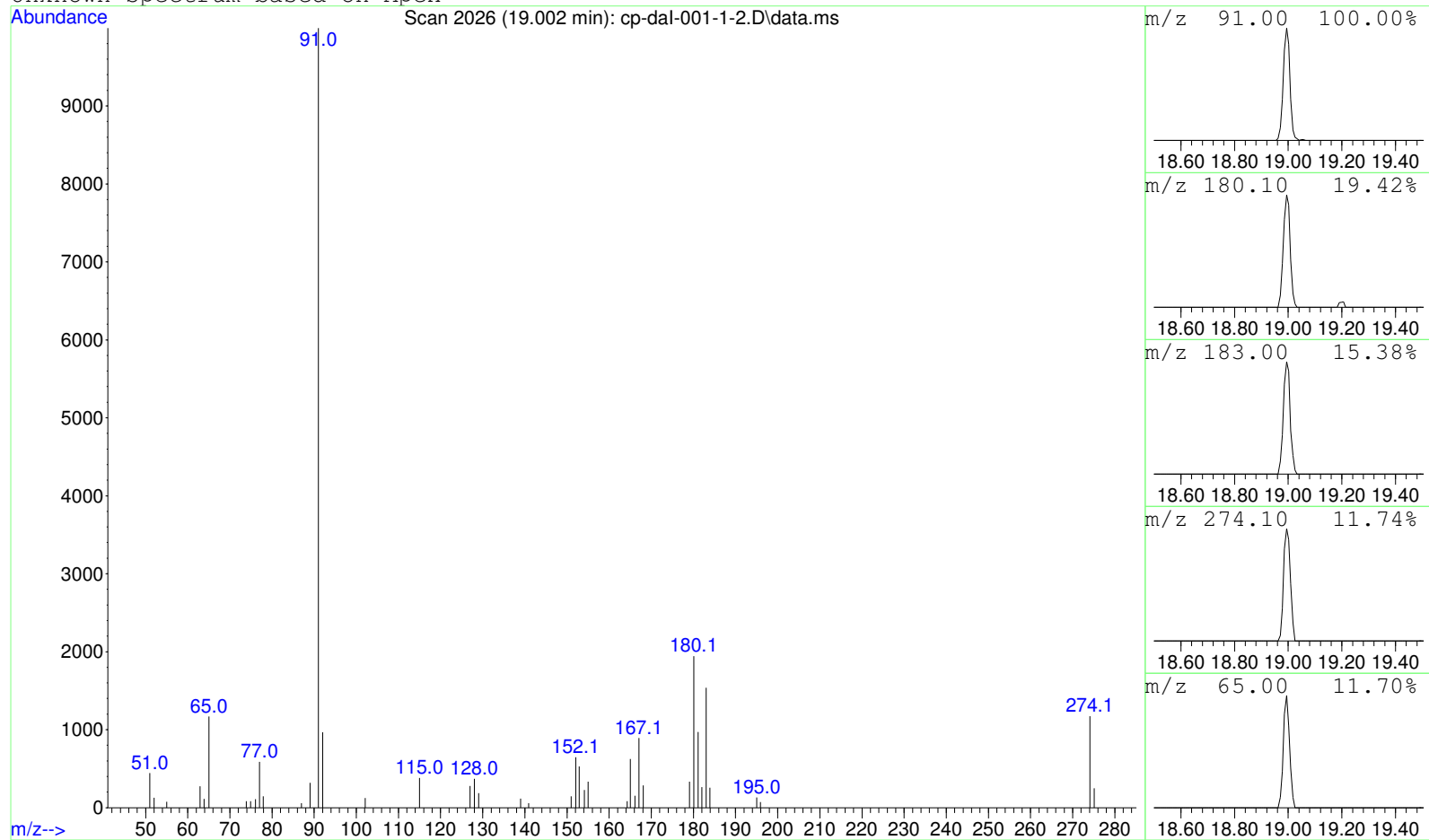
Peak Number: 3 at 13.935 min Area: 5297082 Area % 12.18

The 3 best hits from each library.

Ref\# CAS\# Qual

C:\DATABASE\DEMO.L No hits were retrieved.

Unknown Spectrum based on Apex



Data File: D:\GCMS Daten\140912\cp-daI-001-1-2.D

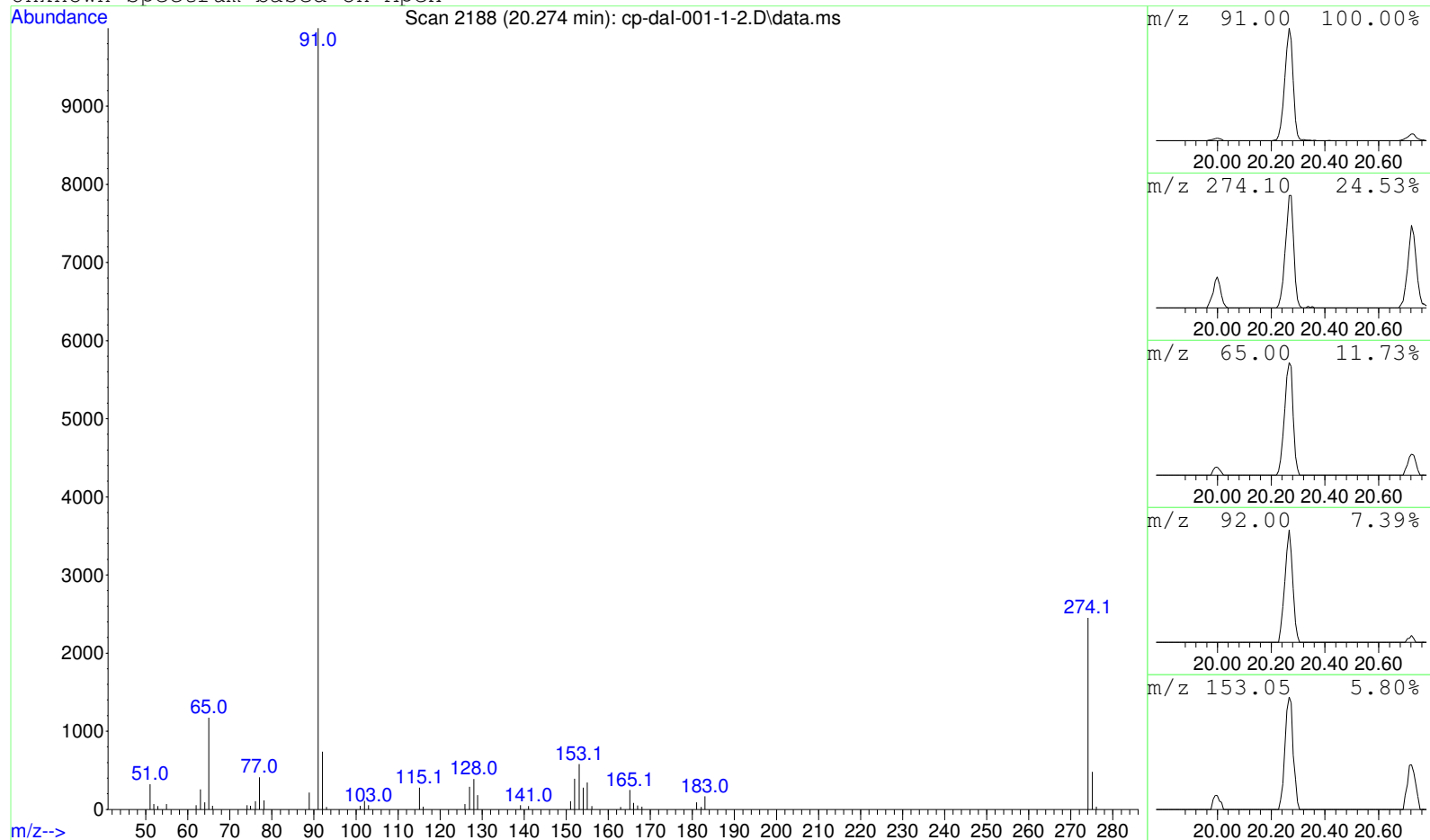
Sample : cp-daI-001-1-2

Peak Number: 4 at 19.002 min Area: 1355285 Area % 3.12

The 3 best hits from each library. Ref\# CAS\# Qual

C:\DATABASE\DEMO.L No hits were retrieved.

Unknown Spectrum based on Apex



Data File: D:\GCMS Daten\140912\cp-daI-001-1-2.D

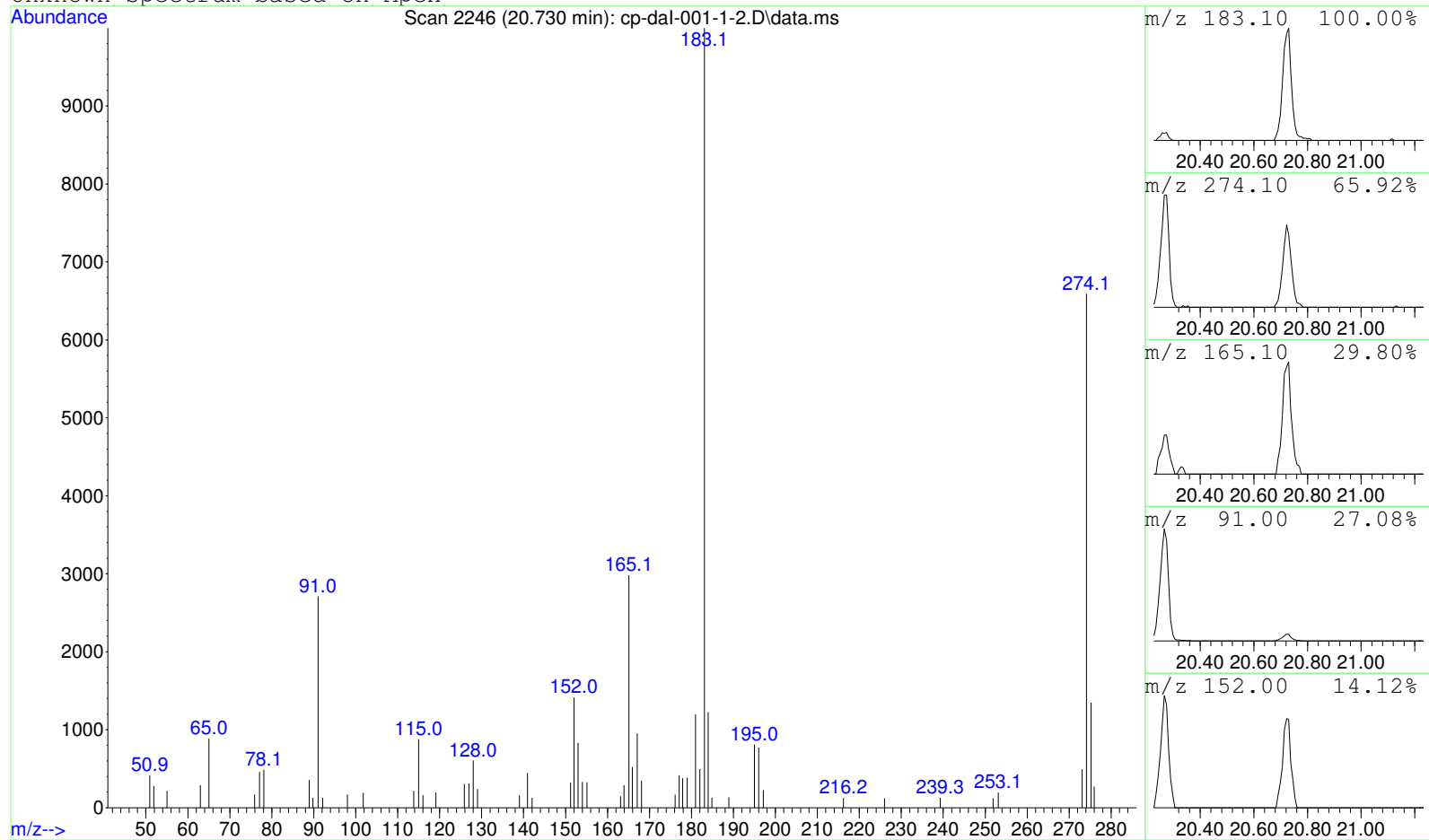
Sample : cp-daI-001-1-2

Peak Number: 5 at 20.274 min Area: 2532111 Area % 5.82

The 3 best hits from each library. Ref\# CAS\# Qual

C:\DATABASE\DEMO.L No hits were retrieved.

Unknown Spectrum based on Apex



Data File: D:\GCMS Daten\140912\cp-daI-001-1-2.D

Sample : cp-daI-001-1-2

Peak Number: 6 at 20.730 min Area: 1280977 Area % 2.95

The 3 best hits from each library. Ref\# CAS\# Qual

C:\DATABASE\DEMO.L No hits were retrieved.