

Area Percent Report

Data Path : D:\GCMS Daten\140910\
Data File : cp-daI-001-1-1.D
Acq On : 10 Sep 2014 15:05
Operator : JD
Sample : cp-daI-001-1-1
Misc :
ALS Vial : 42 Sample Multiplier: 1

Integration Parameters: autoint1.e
Integrator: ChemStation

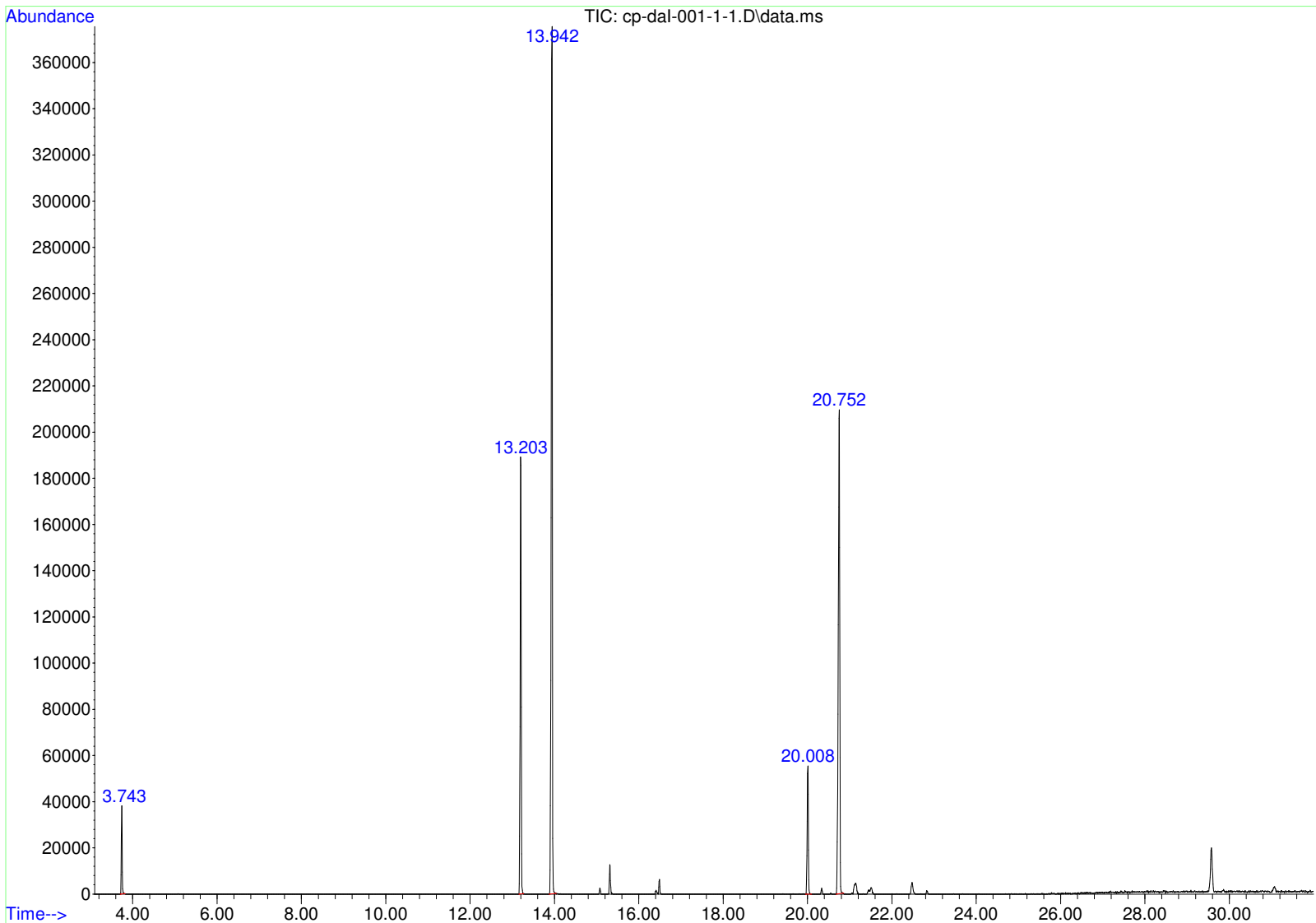
Method : D:\GCMS Daten\140901\ocwmm06roh.D\STANDARD.M
Title :

Signal : TIC: cp-daI-001-1-1.D\data.ms

peak #	R.T. min	first scan	max scan	last scan	PK TY	peak height	corr. area	corr. % max.	% of total
1	3.743	79	84	91	BB	36419	532890	7.49%	3.094%
2	13.203	1282	1288	1296	BB	189645	3369716	47.38%	19.566%
3	13.942	1373	1382	1393	BB	370977	7112015	100.00%	41.295%
4	20.008	2147	2154	2163	BB	54686	1091491	15.35%	6.338%
5	20.752	2239	2249	2260	BB	209932	5116271	71.94%	29.707%

Sum of corrected areas: 17222382

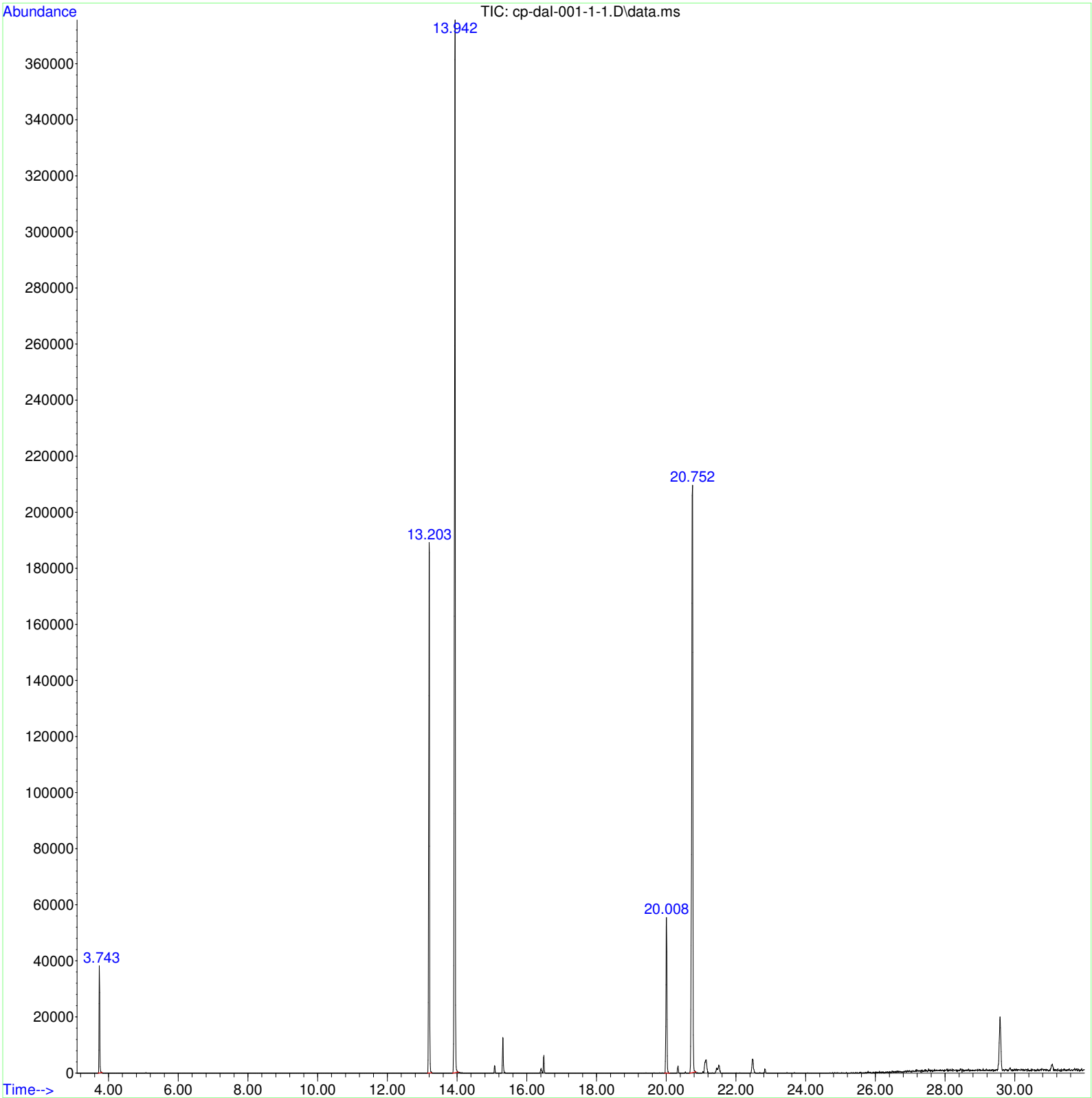
STANDARD.M Wed Sep 10 15:49:47 2014 GCMS



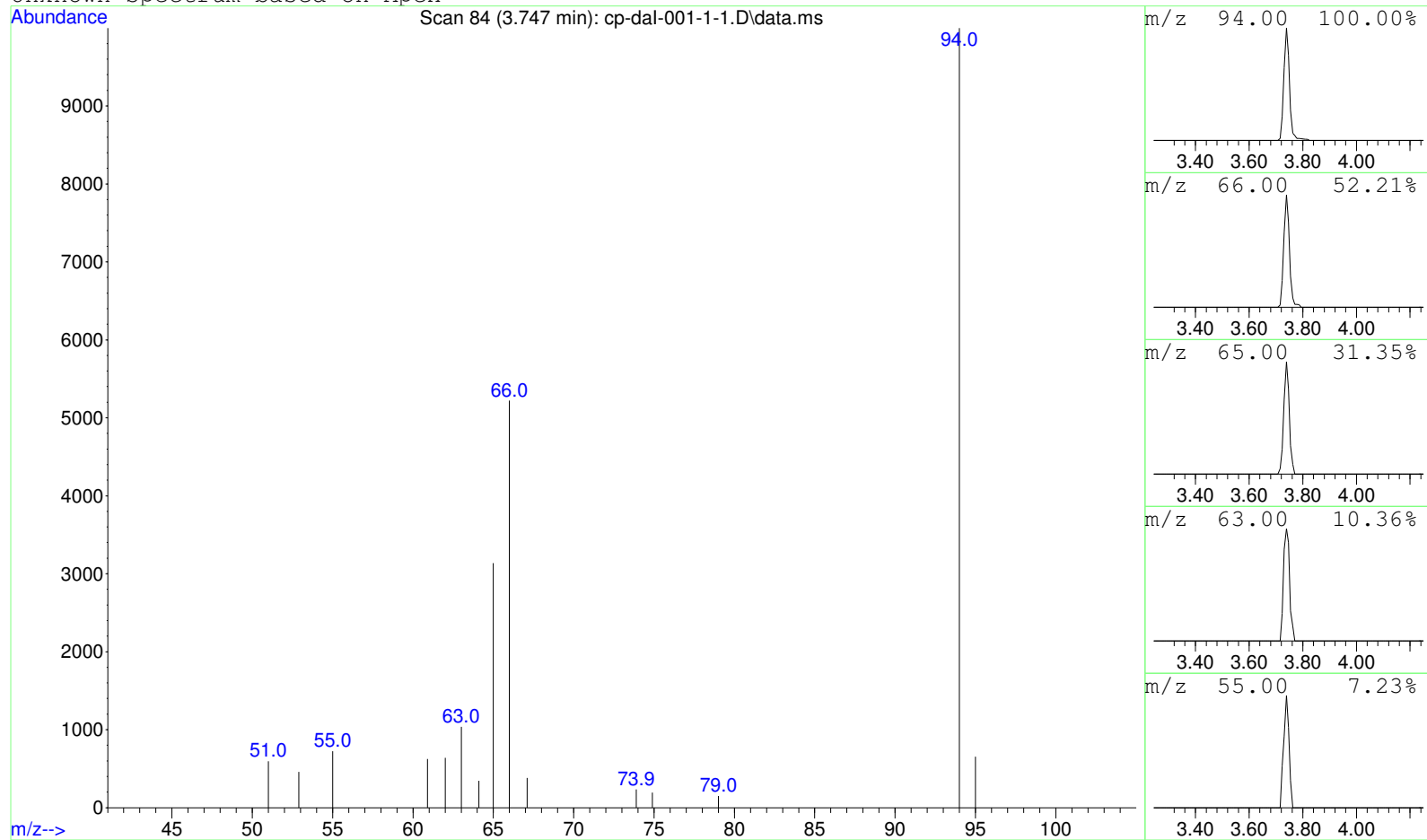
Data Path : D:\GCMS Daten\140910\
Data File : cp-daI-001-1-1.D
Acq On : 10 Sep 2014 15:05
Operator : JD
Sample : cp-daI-001-1-1
Misc :
ALS Vial : 42 Sample Multiplier: 1

Search Libraries: C:\DATABASE\DEMO.L Minimum Quality: 0

Unknown Spectrum: Apex
Integration Events: ChemStation Integrator - autoint1.e



Unknown Spectrum based on Apex



Data File: D:\GCMS Daten\140910\cp-daI-001-1-1.D

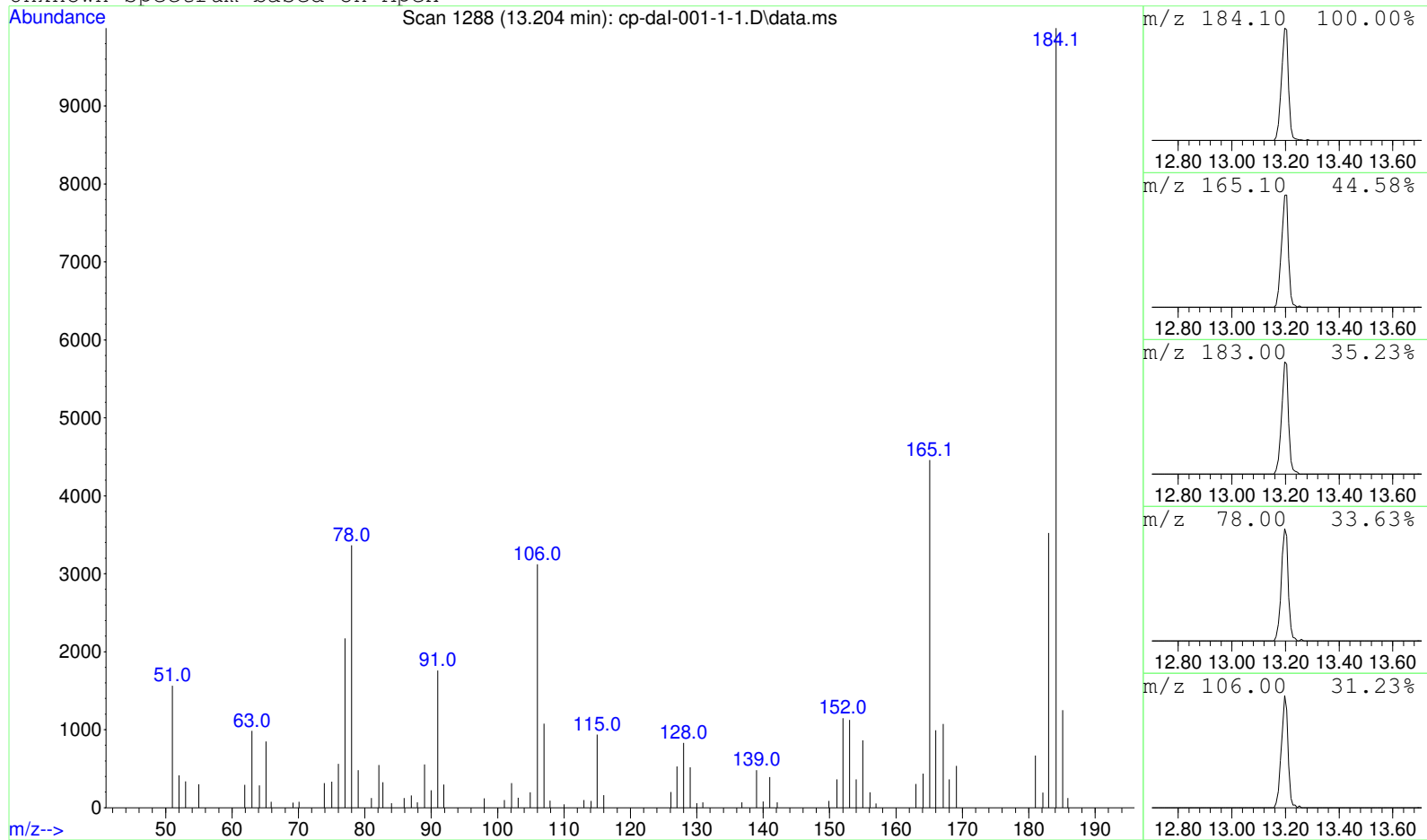
Sample : cp-daI-001-1-1

Peak Number: 1 at 3.747 min Area: 532890 Area % 3.09

The 3 best hits from each library. Ref\# CAS\# Qual

C:\DATABASE\DEMO.L No hits were retrieved.

Unknown Spectrum based on Apex



Data File: D:\GCMS Daten\140910\cp-daI-001-1-1.D

Sample : cp-daI-001-1-1

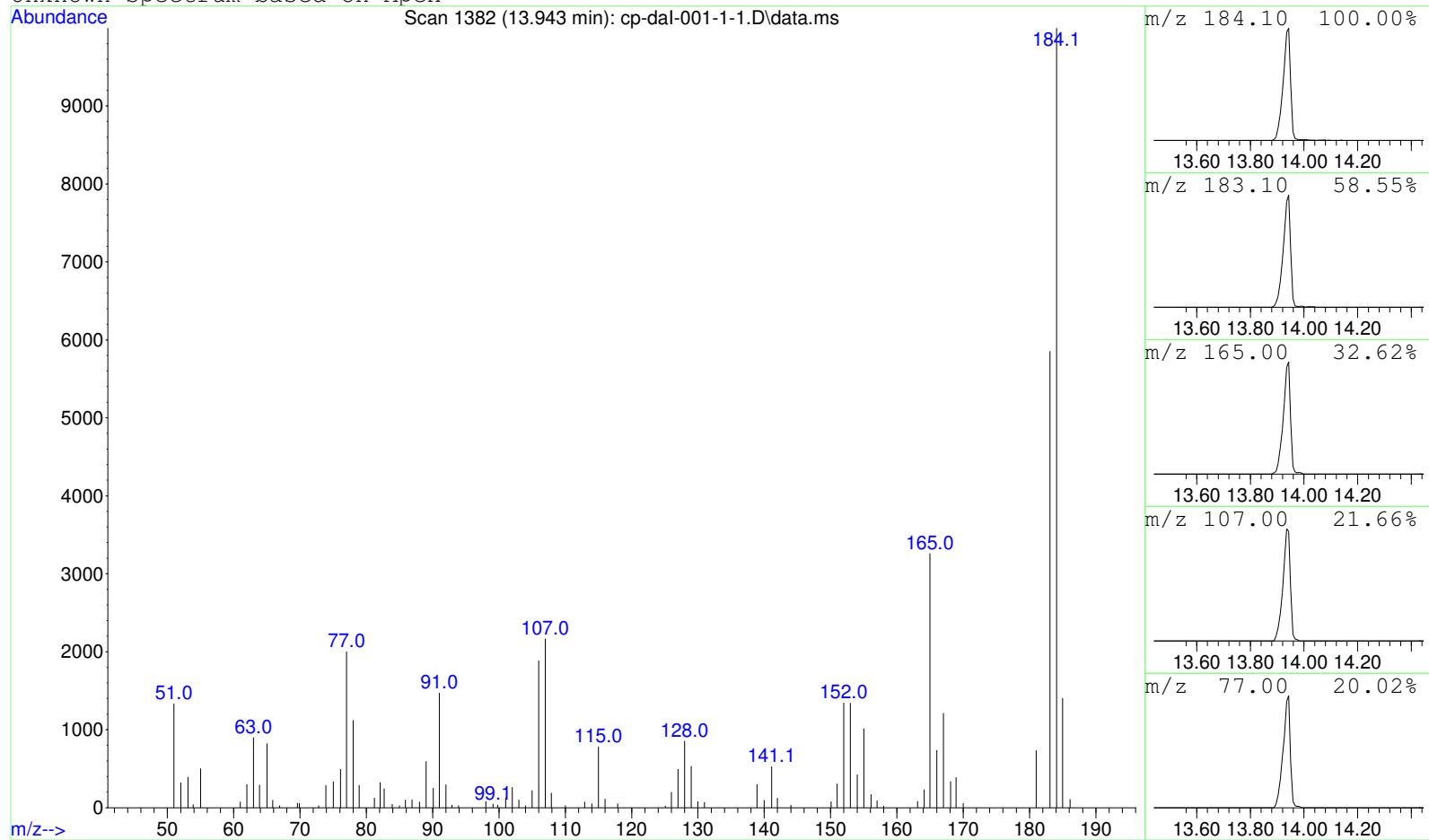
Peak Number: 2 at 13.204 min Area: 3369716 Area % 19.57

The 3 best hits from each library.

Ref\# CAS\# Qual

C:\DATABASE\DEMO.L No hits were retrieved.

Unknown Spectrum based on Apex



Data File: D:\GCMS Daten\140910\cp-daI-001-1-1.D

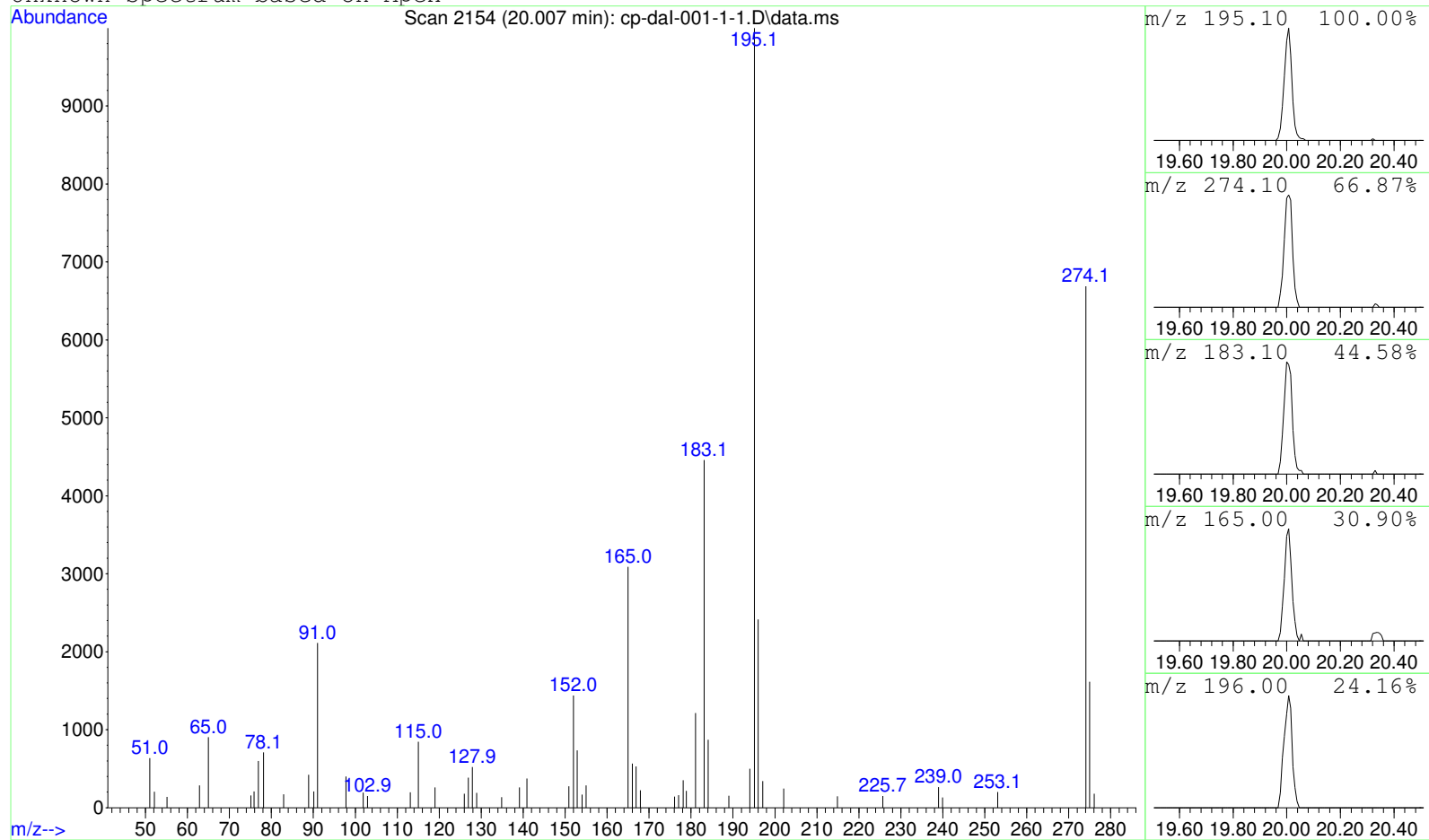
Sample : cp-daI-001-1-1

Peak Number: 3 at 13.943 min Area: 7112015 Area % 41.30

The 3 best hits from each library. Ref\# CAS\# Qual

C:\DATABASE\DEMO.L No hits were retrieved.

Unknown Spectrum based on Apex



Data File: D:\GCMS Daten\140910\cp-daI-001-1-1.D

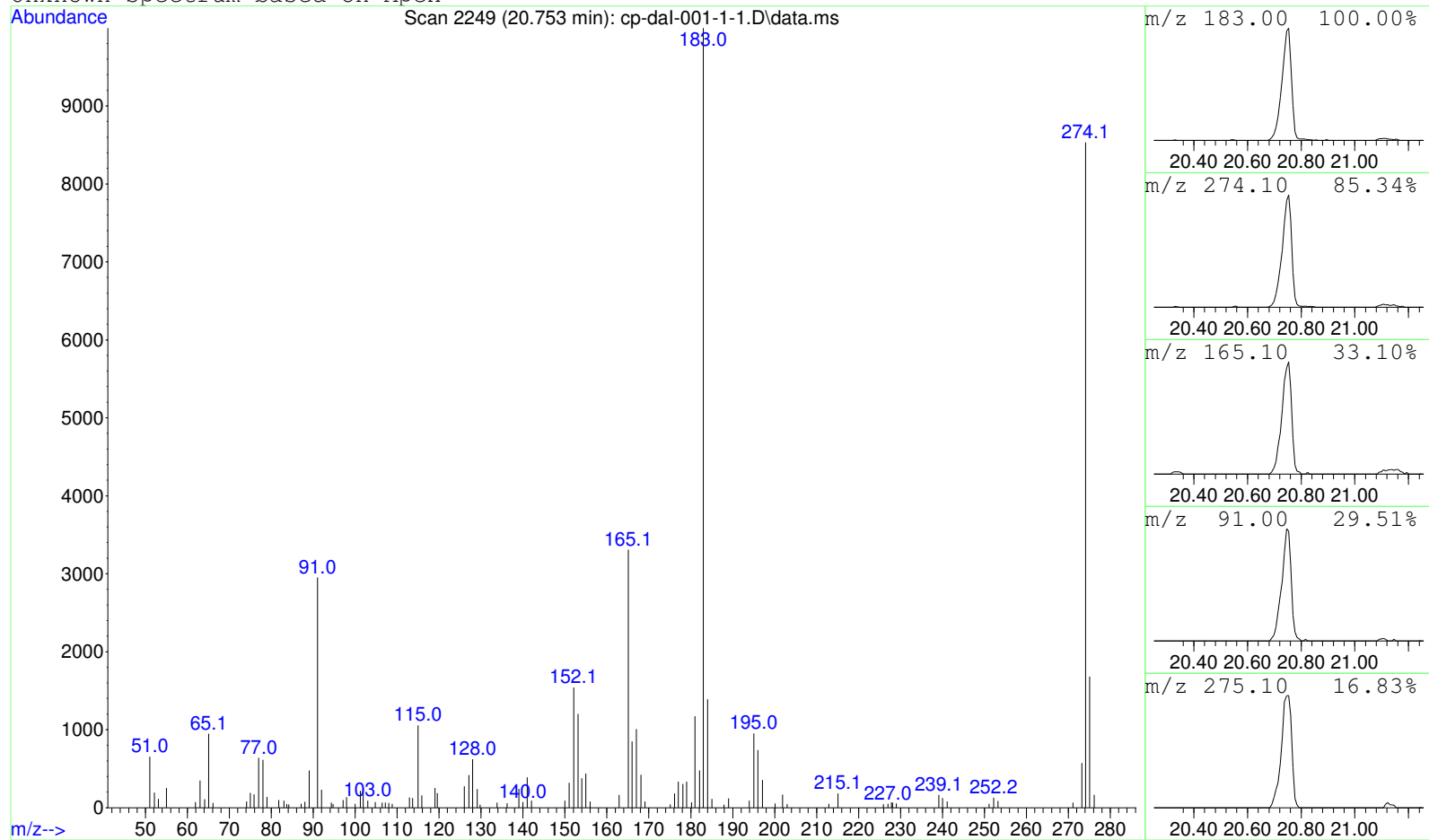
Sample : cp-daI-001-1-1

Peak Number: 4 at 20.007 min Area: 1091491 Area % 6.34

The 3 best hits from each library. Ref\# CAS\# Qual

C:\DATABASE\DEMO.L No hits were retrieved.

Unknown Spectrum based on Apex



Data File: D:\GCMS Daten\140910\cp-daI-001-1-1.D

Sample : cp-daI-001-1-1

Peak Number: 5 at 20.753 min Area: 5116271 Area % 29.71

The 3 best hits from each library. Ref\# CAS\# Qual

C:\DATABASE\DEMO.L No hits were retrieved.