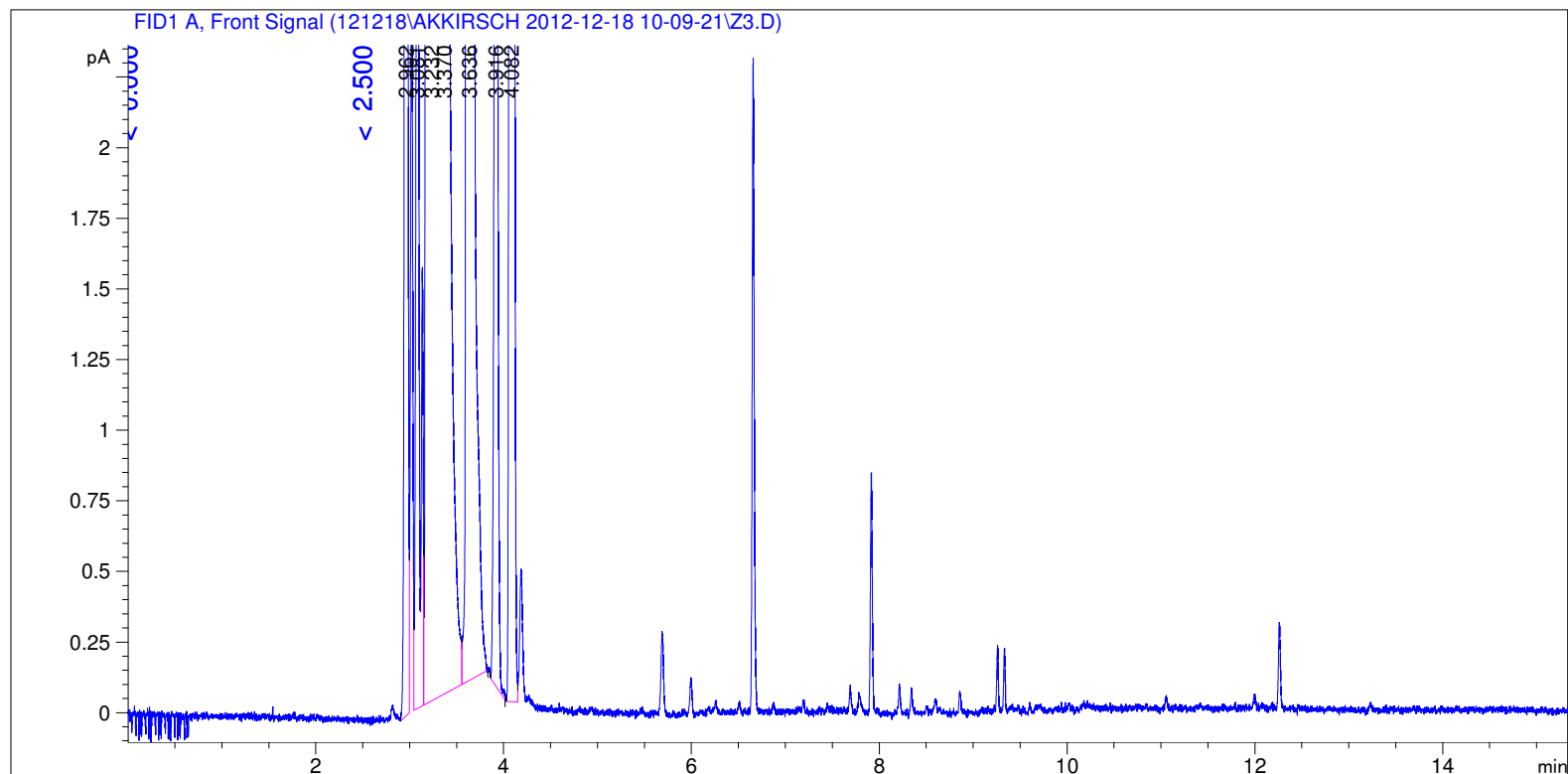


=====

Acq. Operator	: SYSTEM	Seq. Line	: 7
Acq. Instrument	: GC FID	Location	: Vial 107
Injection Date	: 12/18/2012 12:08:52 PM	Inj	: 1
		Inj Volume	: 0.5 µl

Acq. Method : C:\CHEM32\1\DATA\121218\AKKIRSCH 2012-12-18 10-09-21\LOW 40 AK.M
Last changed : 12/18/2012 10:09:21 AM by SYSTEM
Analysis Method : C:\CHEM32\1\DATA\121218\AKKIRSCH 2012-12-18 10-09-21\LOW 40 AK.M (Sequence Method)
Last changed : 12/18/2012 1:10:02 PM by SYSTEM
(modified after loading) (Current integration events modified)
Method Info : 40 low



=====
Area Percent Report
=====

Sorted By : Retention Time
Calib. Data Modified : Thursday, July 19, 2012 3:04:51 PM
Multiplier : 1.0000
Dilution : 1.0000
Do not use Multiplier & Dilution Factor with ISTDs

Signal 1: FID1 A, Front Signal

Peak #	RetTime [min]	Sig	Type	Area [pA*s]	Area %	Name
1	3.502	1		0.00000	0.00000	C12
2	3.916	1	BB	15.10232	0.01768	C13
3	4.082	1	BV	106.02265	0.12411	C14
4	4.521	1		0.00000	0.00000	C15

Totals : 121.12497

Uncalibrated Peaks:

Peak #	RetTime [min]	Sig	Type	Area [pA*s]	Area %	Name
1	2.962	1	BV	21.51700	0.02519	?
2	3.081	1	VV	10.88429	0.01274	?
3	3.232	1	VV S	6.20893e4	72.68024	?
4	3.370	1	BB X	1.25511e4	14.69200	?
5	3.636	1	VB S	1.06341e4	12.44804	?

Uncalib. totals : 8.53070e4

1 Warnings or Errors :

Warning : Calibrated compound(s) not found

=====
Summed Peaks Report
=====

=====
Final Summed Peaks Report
=====

Name	Total Area [pA*s]	Area %
C12	0.00000	0.0000
C13	15.10232	0.0177
C14	106.02265	0.1241
C15	0.00000	0.0000

Totals : 1.4179e-1

*** End of Report ***