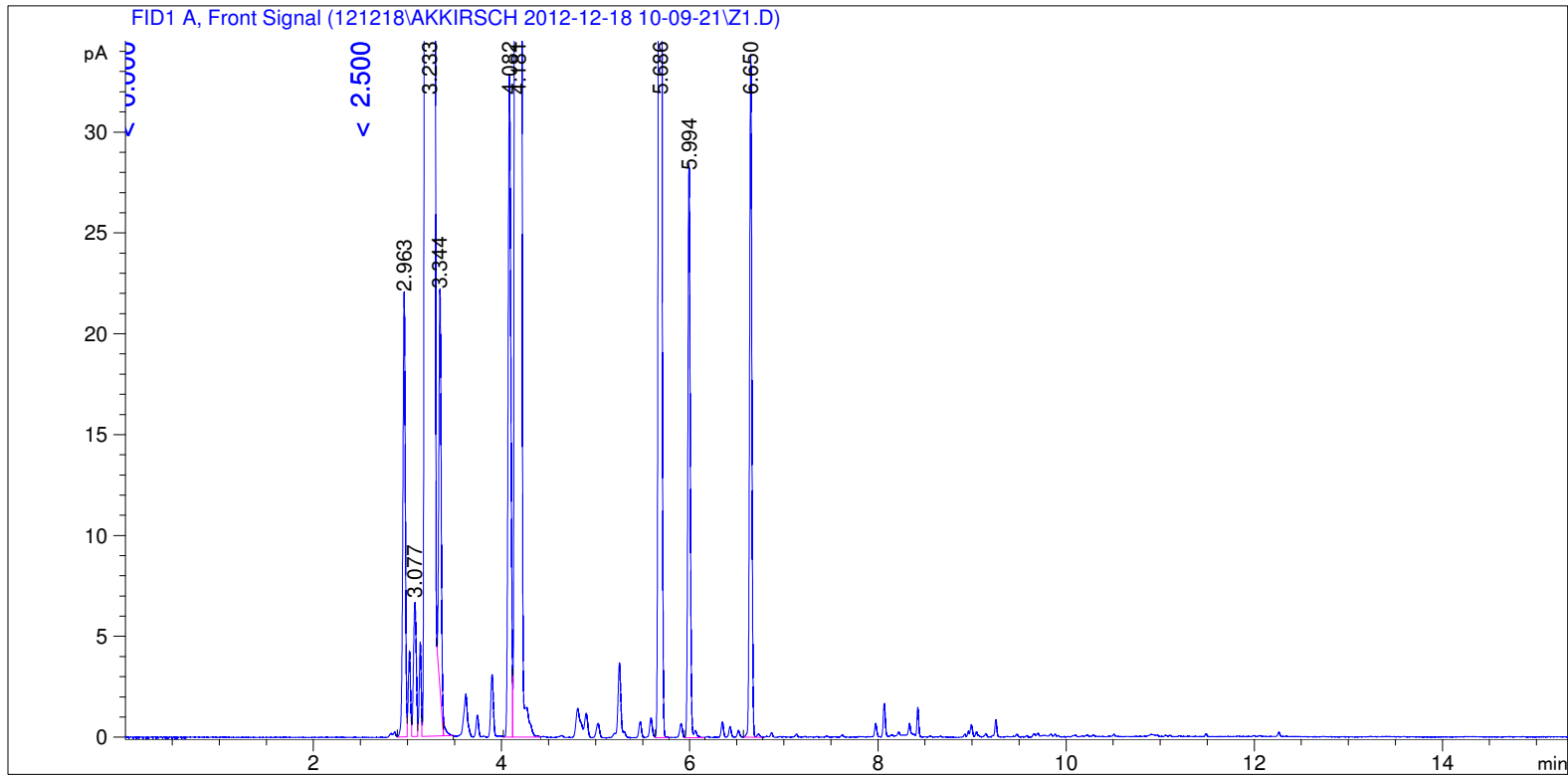


```

=====
Acq. Operator   : SYSTEM                      Seq. Line :    5
Acq. Instrument : GC FID                     Location  : Vial 105
Injection Date  : 12/18/2012 11:29:18 AM     Inj       :    1
                                           Inj Volume: 0.5 µl

Acq. Method     : C:\CHEM32\1\DATA\121218\AKKIRSCH 2012-12-18 10-09-21\LOW 40 AK.M
Last changed    : 12/18/2012 10:09:21 AM by SYSTEM
Analysis Method : C:\CHEM32\1\DATA\121218\AKKIRSCH 2012-12-18 10-09-21\LOW 40 AK.M (Sequence
Method)
Last changed    : 12/18/2012 1:09:14 PM by SYSTEM
                 (modified after loading) (Current integration events modified)
Method Info     : 40 low
  
```



=====
 Area Percent Report
 =====

```

Sorted By           :      Retention Time
Calib. Data Modified :      Thursday, July 19, 2012 3:04:51 PM
Multiplier          :      1.0000
Dilution            :      1.0000
Do not use Multiplier & Dilution Factor with ISTDs
  
```

Signal 1: FID1 A, Front Signal

Peak #	RetTime [min]	Sig	Type	Area [pA*s]	Area %	Name
1	3.502	1		0.00000	0.00000	C12
2	3.828	1		0.00000	0.00000	C13
3	4.181	1	VB	9531.31641	13.61175	C14
4	4.521	1		0.00000	0.00000	C15

Totals : 9531.31641

Uncalibrated Peaks:

Peak #	RetTime [min]	Sig	Type	Area [pA*s]	Area %	Name
1	2.963	1	VV	41.24010	0.05890	?
2	3.077	1	VV	14.04001	0.02005	?
3	3.233	1	VB S	5.99652e4	85.63679	?
4	3.344	1	BB T	34.01361	0.04858	?
5	4.082	1	BV	67.82926	0.09687	?
6	5.686	1	VB	261.30353	0.37317	?
7	5.994	1	VB	50.13890	0.07160	?
8	6.650	1	BB	57.62853	0.08230	?

Uncalib. totals : 6.04914e4

1 Warnings or Errors :

Warning : Calibrated compound(s) not found

Summed Peaks Report

Final Summed Peaks Report

Name	Total Area [pA*s]	Area %
C12	0.00000	0.0000
C13	0.00000	0.0000
C14	9531.31641	13.6117
C15	0.00000	0.0000

Totals : 13.6117

*** End of Report ***