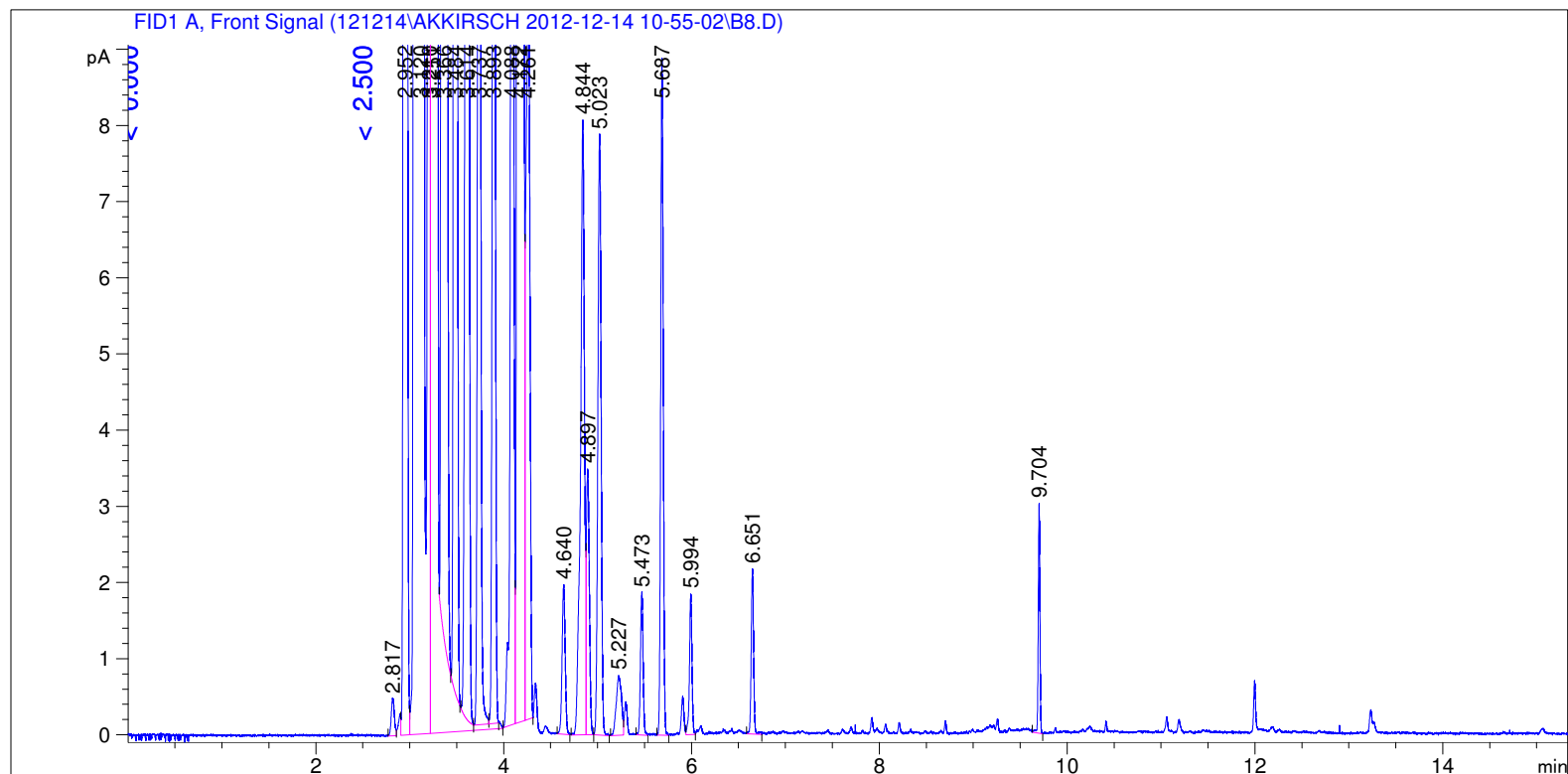


```

=====
Acq. Operator   : SYSTEM                               Seq. Line :   16
Acq. Instrument : GC FID                               Location  : Vial 116
Injection Date  : 12/14/2012 3:54:51 PM                Inj       :    1
                                                    Inj Volume: 0.5 µl

Acq. Method    : C:\CHEM32\1\DATA\121214\AKKIRSCH 2012-12-14 10-55-02\LOW 40 AK.M
Last changed   : 12/14/2012 10:55:02 AM by SYSTEM
Analysis Method : C:\CHEM32\1\DATA\121214\AKKIRSCH 2012-12-14 10-55-02\LOW 40 AK.M (Sequence
Method)
Last changed   : 12/17/2012 8:24:00 AM by SYSTEM
                (modified after loading) (Current integration events modified)
Method Info    : 40 low
  
```



=====
 Area Percent Report
 =====

```

Sorted By           :      Retention Time
Calib. Data Modified :      Thursday, July 19, 2012 3:04:51 PM
Multiplier          :      1.0000
Dilution            :      1.0000
Do not use Multiplier & Dilution Factor with ISTDs
  
```

Signal 1: FID1 A, Front Signal

Peak #	RetTime [min]	Sig	Type	Area [pA*s]	Area %	Name
1	3.484	1	VV X	141.17467	0.27100	C12
2	3.893	1	VB T	41.19222	0.07907	C13
3	4.172	1	VV	2258.98926	4.33636	C14
4	4.521	1		0.00000	0.00000	C15

Totals : 2441.35614

Uncalibrated Peaks:

Peak #	RetTime [min]	Sig	Type	Area [pA*s]	Area %	Name
1	2.817	1	BV	1.14366	0.00220	?
2	2.952	1	VV	388.59671	0.74595	?
3	3.120	1	VV S	2.85594e4	54.82266	?
4	3.210	1	BV T	62.87883	0.12070	?
5	3.251	1	VB S	1.67741e4	32.19964	?
6	3.366	1	BV X	3562.30762	6.83821	?
7	3.614	1	VV X	87.88846	0.16871	?
8	3.737	1	VV T	51.68900	0.09922	?
9	4.088	1	BV	46.95784	0.09014	?
10	4.261	1	VB	28.82051	0.05532	?
11	4.640	1	BB	4.53832	0.00871	?
12	4.844	1	BV	23.36929	0.04486	?
13	4.897	1	VB	7.79066	0.01495	?
14	5.023	1	BB	18.94277	0.03636	?
15	5.227	1	BV	3.04304	0.00584	?
16	5.473	1	BB	3.66347	0.00703	?
17	5.687	1	BB	16.65499	0.03197	?
18	5.994	1	VV	3.46044	0.00664	?
19	6.651	1	BB	3.85245	0.00740	?
20	9.704	1	BB	3.66982	0.00704	?

Uncalib. totals : 4.96528e4

1 Warnings or Errors :

Warning : Calibrated compound(s) not found

Summed Peaks Report

Final Summed Peaks Report

Name	Total Area [pA*s]	Area %
C12	141.17467	0.2710
C13	41.19222	0.0791
C14	2258.98926	4.3364
C15	0.00000	0.0000

Totals : 4.6864

*** End of Report ***