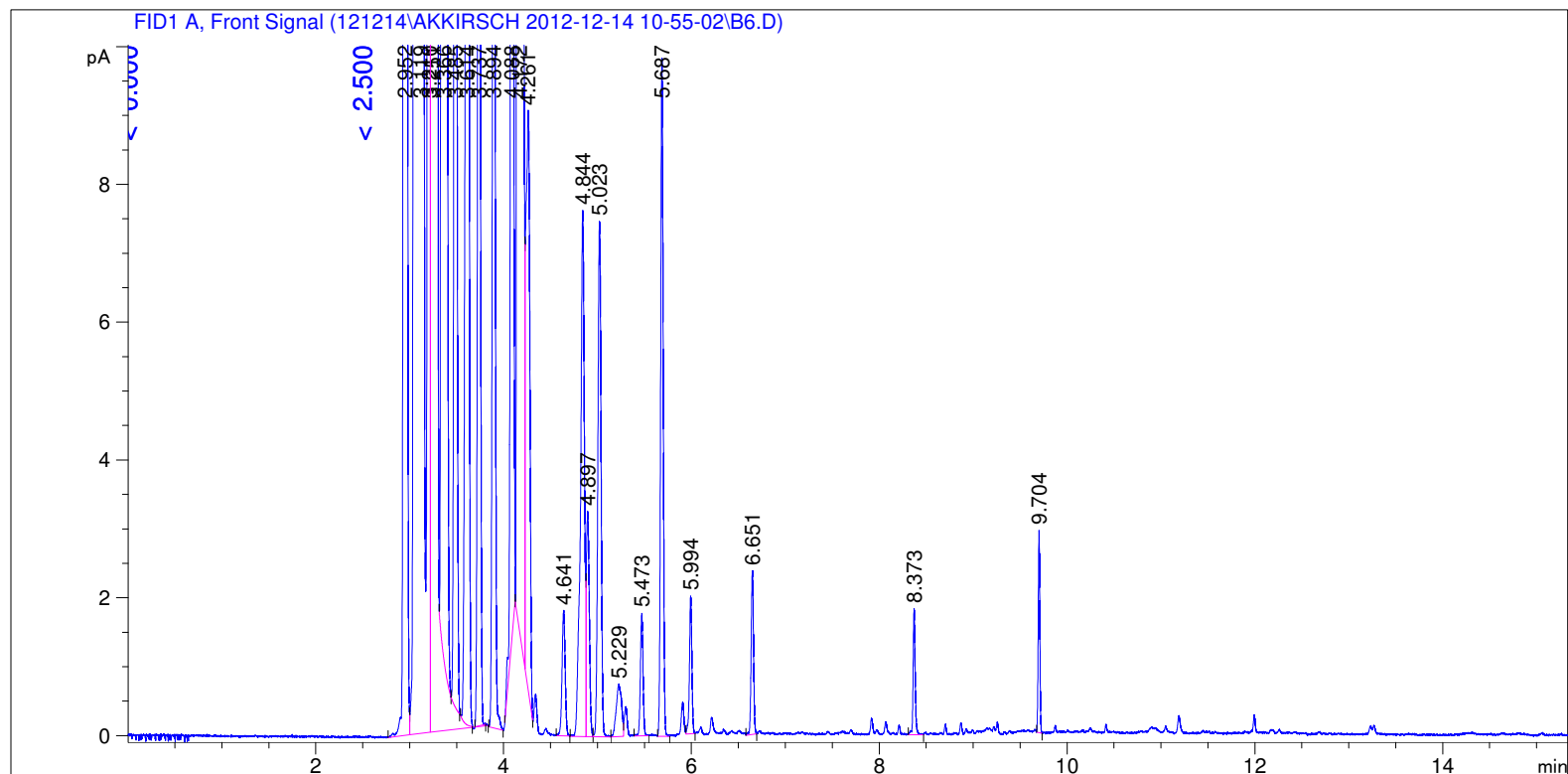


```

=====
Acq. Operator   : SYSTEM                               Seq. Line :   14
Acq. Instrument : GC FID                               Location  : Vial 114
Injection Date  : 12/14/2012 3:15:15 PM                Inj       :    1
                                                    Inj Volume: 0.5 µl

Acq. Method     : C:\CHEM32\1\DATA\121214\AKKIRSCH 2012-12-14 10-55-02\LOW 40 AK.M
Last changed    : 12/14/2012 10:55:02 AM by SYSTEM
Analysis Method : C:\CHEM32\1\DATA\121214\AKKIRSCH 2012-12-14 10-55-02\LOW 40 AK.M (Sequence
                  Method)
Last changed    : 12/17/2012 8:23:13 AM by SYSTEM
                  (modified after loading) (Current integration events modified)
Method Info     : 40 low
  
```



=====  
 Area Percent Report  
 =====

```

Sorted By           :      Retention Time
Calib. Data Modified :      Thursday, July 19, 2012 3:04:51 PM
Multiplier          :      1.0000
Dilution            :      1.0000
Do not use Multiplier & Dilution Factor with ISTDs
  
```

Signal 1: FID1 A, Front Signal

Peak #	RetTime [min]	Sig	Type	Area [pA*s]	Area %	Name
1	3.485	1	VV X	55.25702	0.10750	C12
2	3.894	1	BB	36.25809	0.07054	C13
3	4.172	1	BV	2085.28833	4.05674	C14
4	4.521	1		0.00000	0.00000	C15

Totals : 2176.80344

Uncalibrated Peaks:

Peak #	RetTime [min]	Sig	Type	Area [pA*s]	Area %	Name
1	2.952	1	BV	381.25824	0.74170	?
2	3.119	1	VV S	2.82999e4	55.05498	?
3	3.210	1	BV T	88.32423	0.17183	?
4	3.251	1	VB S	1.66926e4	32.47392	?
5	3.366	1	BV X	3486.29736	6.78228	?
6	3.614	1	VV X	72.59308	0.14122	?
7	3.737	1	VB T	41.82924	0.08137	?
8	4.088	1	BB	48.53790	0.09443	?
9	4.261	1	VB	24.57790	0.04781	?
10	4.641	1	BB	4.25808	0.00828	?
11	4.844	1	BV	21.96415	0.04273	?
12	4.897	1	VV	7.32963	0.01426	?
13	5.023	1	VB	17.83180	0.03469	?
14	5.229	1	BV	2.97599	0.00579	?
15	5.473	1	BB	3.47498	0.00676	?
16	5.687	1	BB	18.44288	0.03588	?
17	5.994	1	VB	3.61510	0.00703	?
18	6.651	1	BB	4.19385	0.00816	?
19	8.373	1	BB	2.75841	0.00537	?
20	9.704	1	BB	3.45888	0.00673	?

Uncalib. totals : 4.92263e4

1 Warnings or Errors :

Warning : Calibrated compound(s) not found

=====  
Summed Peaks Report  
=====

=====  
Final Summed Peaks Report  
=====

Name	Total Area [pA*s]	Area %
C12	55.25702	0.1075
C13	36.25809	0.0705
C14	2085.28833	4.0567
C15	0.00000	0.0000

Totals : 4.2348

\*\*\* End of Report \*\*\*