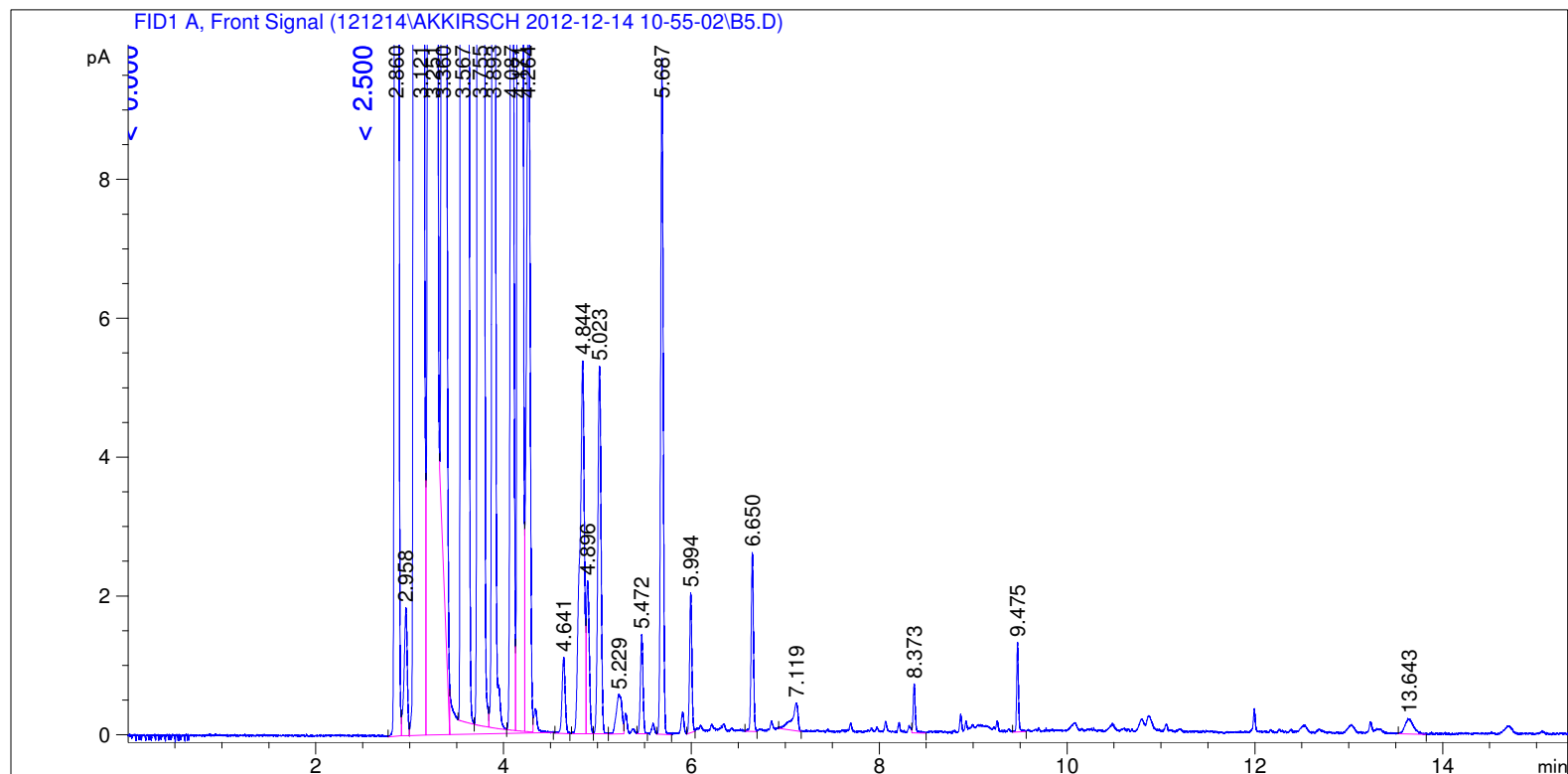


```

=====
Acq. Operator   : SYSTEM                      Seq. Line :   13
Acq. Instrument : GC FID                      Location  : Vial 113
Injection Date  : 12/14/2012 2:55:28 PM      Inj       :    1
                                           Inj Volume: 0.5 µl
Acq. Method     : C:\CHEM32\1\DATA\121214\AKKIRSCH 2012-12-14 10-55-02\LOW 40 AK.M
Last changed    : 12/14/2012 10:55:02 AM by SYSTEM
Analysis Method : C:\CHEM32\1\DATA\121214\AKKIRSCH 2012-12-14 10-55-02\LOW 40 AK.M (Sequence
Method)
Last changed    : 12/17/2012 8:22:47 AM by SYSTEM
                 (modified after loading) (Current integration events modified)
Method Info     : 40 low
  
```



=====
 Area Percent Report
 =====

```

Sorted By           :      Retention Time
Calib. Data Modified :      Thursday, July 19, 2012 3:04:51 PM
Multiplier          :      1.0000
Dilution            :      1.0000
Do not use Multiplier & Dilution Factor with ISTDs
  
```

Signal 1: FID1 A, Front Signal

Peak #	RetTime [min]	Sig	Type	Area [pA*s]	Area %	Name
1	3.567	1	BV X	1098.37964	2.12631	C12
2	3.893	1	VV X	67.33220	0.13035	C13
3	4.171	1	VV X	691.86163	1.33934	C14
4	4.521	1		0.00000	0.00000	C15

Totals : 1857.57347

Uncalibrated Peaks:

Peak #	RetTime [min]	Sig	Type	Area [pA*s]	Area %	Name
1	2.860	1	BV	465.43665	0.90102	?
2	2.958	1	VV	4.38689	0.00849	?
3	3.121	1	VV S	2.89535e4	56.04989	?
4	3.251	1	VB S	1.71625e4	33.22422	?
5	3.360	1	BB T	699.52191	1.35417	?
6	3.755	1	VV X	2357.09692	4.56300	?
7	4.087	1	VV X	50.23507	0.09725	?
8	4.264	1	VV X	30.91535	0.05985	?
9	4.641	1	BB	2.57877	0.00499	?
10	4.844	1	BV	17.85430	0.03456	?
11	4.896	1	VV	4.92751	0.00954	?
12	5.023	1	VB	12.66490	0.02452	?
13	5.229	1	BV	2.35649	0.00456	?
14	5.472	1	VB	2.74923	0.00532	?
15	5.687	1	BB	18.26536	0.03536	?
16	5.994	1	BB	3.46660	0.00671	?
17	6.650	1	BB	4.44118	0.00860	?
18	7.119	1	BB	1.85325	0.00359	?
19	8.373	1	VB	1.12956	0.00219	?
20	9.475	1	BB	1.74092	0.00337	?
21	13.643	1	BB	1.44790	0.00280	?

Uncalib. totals : 4.97992e4

1 Warnings or Errors :

Warning : Calibrated compound(s) not found

Summed Peaks Report

Final Summed Peaks Report

Name	Total Area [pA*s]	Area %
C12	1098.37964	2.1263
C13	67.33220	0.1303
C14	691.86163	1.3393
C15	0.00000	0.0000

Totals : 3.5960

*** End of Report ***