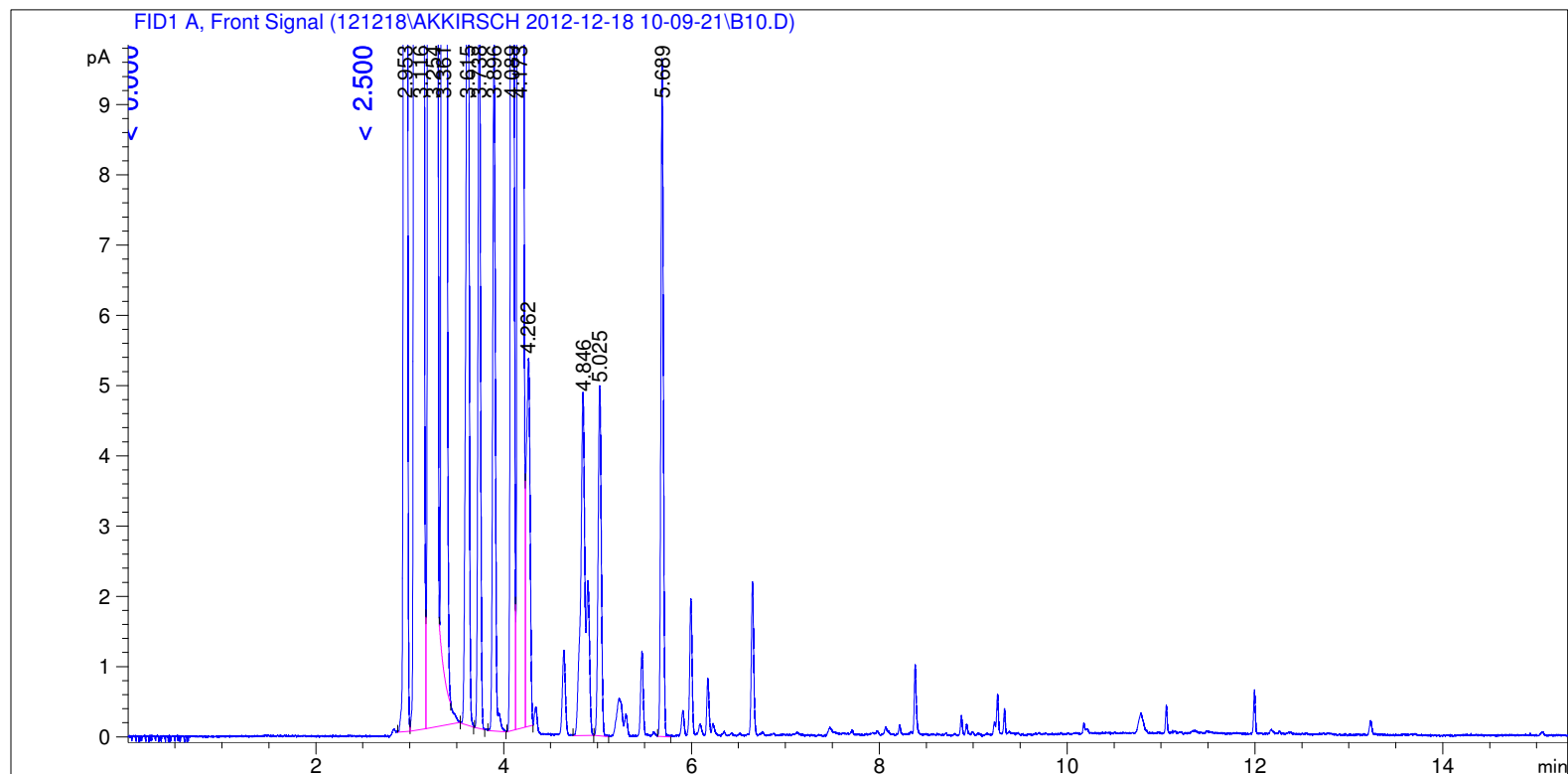


```

=====
Acq. Operator   : SYSTEM                      Seq. Line :    4
Acq. Instrument : GC FID                      Location  : Vial 104
Injection Date  : 12/18/2012 11:09:28 AM      Inj       :    1
                                           Inj Volume: 0.5 µl

Acq. Method     : C:\CHEM32\1\DATA\121218\AKKIRSCH 2012-12-18 10-09-21\LOW 40 AK.M
Last changed    : 12/18/2012 10:09:21 AM by SYSTEM
Analysis Method : C:\CHEM32\1\DATA\121218\AKKIRSCH 2012-12-18 10-09-21\LOW 40 AK.M (Sequence
Method)
Last changed    : 12/18/2012 1:08:52 PM by SYSTEM
                 (modified after loading) (Current integration events modified)
Method Info     : 40 low
  
```



=====
 Area Percent Report
 =====

```

Sorted By           :      Retention Time
Calib. Data Modified :      Thursday, July 19, 2012 3:04:51 PM
Multiplier          :      1.0000
Dilution            :      1.0000
Do not use Multiplier & Dilution Factor with ISTDs
  
```

Signal 1: FID1 A, Front Signal

Peak #	RetTime [min]	Sig	Type	Area [pA*s]	Area %	Name
1	3.502	1		0.00000	0.00000	C12
2	3.896	1	BB	19.08288	0.04244	C13
3	4.173	1	VV	1345.49500	2.99228	C14
4	4.521	1		0.00000	0.00000	C15

Totals : 1364.57788

Uncalibrated Peaks:

Peak #	RetTime [min]	Sig	Type	Area [pA*s]	Area %	Name
1	2.953	1	BV	302.72726	0.67324	?
2	3.116	1	VV S	2.59155e4	57.63395	?
3	3.254	1	VB S	1.56922e4	34.89823	?
4	3.361	1	BB X	1507.69067	3.35299	?
5	3.615	1	BB	33.71397	0.07498	?
6	3.738	1	BB	20.77023	0.04619	?
7	4.089	1	BV	65.60136	0.14589	?
8	4.262	1	VB	14.34494	0.03190	?
9	4.846	1	BB	19.07609	0.04242	?
10	5.025	1	BB	11.71509	0.02605	?
11	5.689	1	BB	17.73213	0.03943	?

Uncalib. totals : 4.36010e4

1 Warnings or Errors :

Warning : Calibrated compound(s) not found

=====
Summed Peaks Report
=====

=====
Final Summed Peaks Report
=====

Name	Total Area [pA*s]	Area %
C12	0.00000	0.0000
C13	19.08288	0.0424
C14	1345.49500	2.9923
C15	0.00000	0.0000

Totals : 3.0347

*** End of Report ***