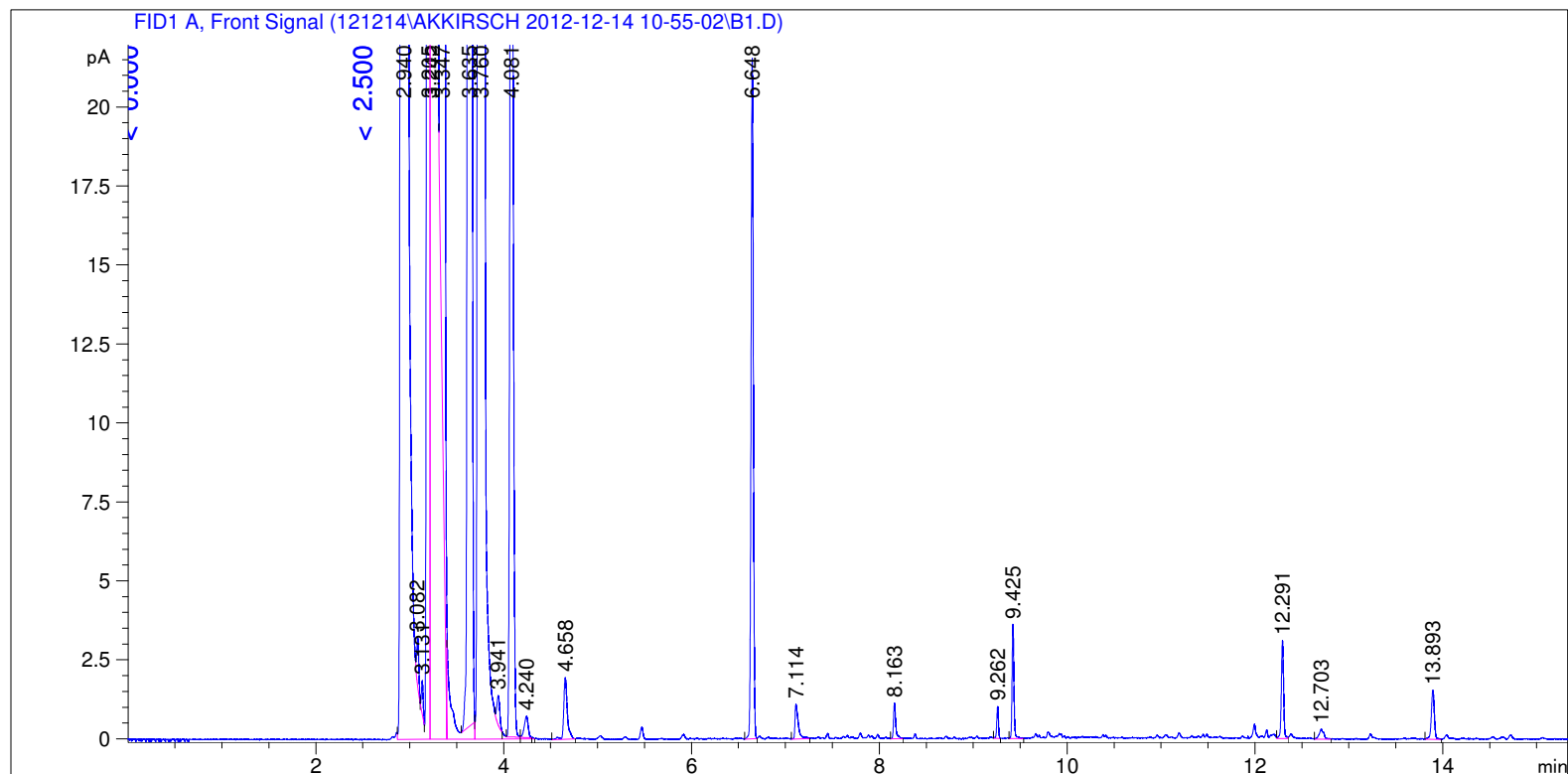


```

=====
Acq. Operator   : SYSTEM                      Seq. Line :    9
Acq. Instrument : GC FID                     Location  : Vial 109
Injection Date  : 12/14/2012 1:36:26 PM      Inj       :    1
                                           Inj Volume: 0.5 µl

Acq. Method     : C:\CHEM32\1\DATA\121214\AKKIRSCH 2012-12-14 10-55-02\LOW 40 AK.M
Last changed    : 12/14/2012 10:55:02 AM by SYSTEM
Analysis Method : C:\CHEM32\1\DATA\121214\AKKIRSCH 2012-12-14 10-55-02\LOW 40 AK.M (Sequence
Method)
Last changed    : 12/17/2012 8:20:44 AM by SYSTEM
                 (modified after loading) (Current integration events modified)
Method Info     : 40 low
  
```



Area Percent Report

```

Sorted By           :      Retention Time
Calib. Data Modified :      Thursday, July 19, 2012 3:04:51 PM
Multiplier          :      1.0000
Dilution            :      1.0000
Do not use Multiplier & Dilution Factor with ISTDs
  
```

Signal 1: FID1 A, Front Signal

Peak #	RetTime [min]	Sig	Type	Area [pA*s]	Area %	Name
1	3.502	1		0.00000	0.00000	C12
2	3.760	1	VB S	1.00934e4	17.37223	C13
3	4.240	1	VB X	1.93135	0.00332	C14
4	4.521	1		0.00000	0.00000	C15

Totals : 1.00953e4

Uncalibrated Peaks:

Peak #	RetTime [min]	Sig	Type	Area [pA*s]	Area %	Name
1	2.940	1	VV S	1.62709e4	28.00479	?
2	3.082	1	BV X	2.31290	0.00398	?
3	3.131	1	VV T	1.29500	0.00223	?
4	3.205	1	VV T	603.62488	1.03893	?
5	3.242	1	VV S	2.90696e4	50.03327	?
6	3.347	1	BB T	1044.37305	1.79753	?
7	3.635	1	BV T	848.36414	1.46017	?
8	3.941	1	BB X	1.91723	0.00330	?
9	4.081	1	BV X	100.23432	0.17252	?
10	4.658	1	BB	5.25475	0.00904	?
11	6.648	1	BB	36.87218	0.06346	?
12	7.114	1	BB	2.66193	0.00458	?
13	8.163	1	BB	1.90134	0.00327	?
14	9.262	1	BB	1.24005	0.00213	?
15	9.425	1	BB	4.89870	0.00843	?
16	12.291	1	VV	5.23784	0.00902	?
17	12.703	1	BB	1.04701	0.00180	?
18	13.893	1	BB	3.47866	0.00599	?

Uncalib. totals : 4.80052e4

1 Warnings or Errors :

Warning : Calibrated compound(s) not found

Summed Peaks Report

Final Summed Peaks Report

Name	Total Area [pA*s]	Area %
C12	0.00000	0.0000
C13	1.00934e4	17.3722
C14	1.93135	3.324e-3
C15	0.00000	0.0000

Totals : 17.3756

*** End of Report ***