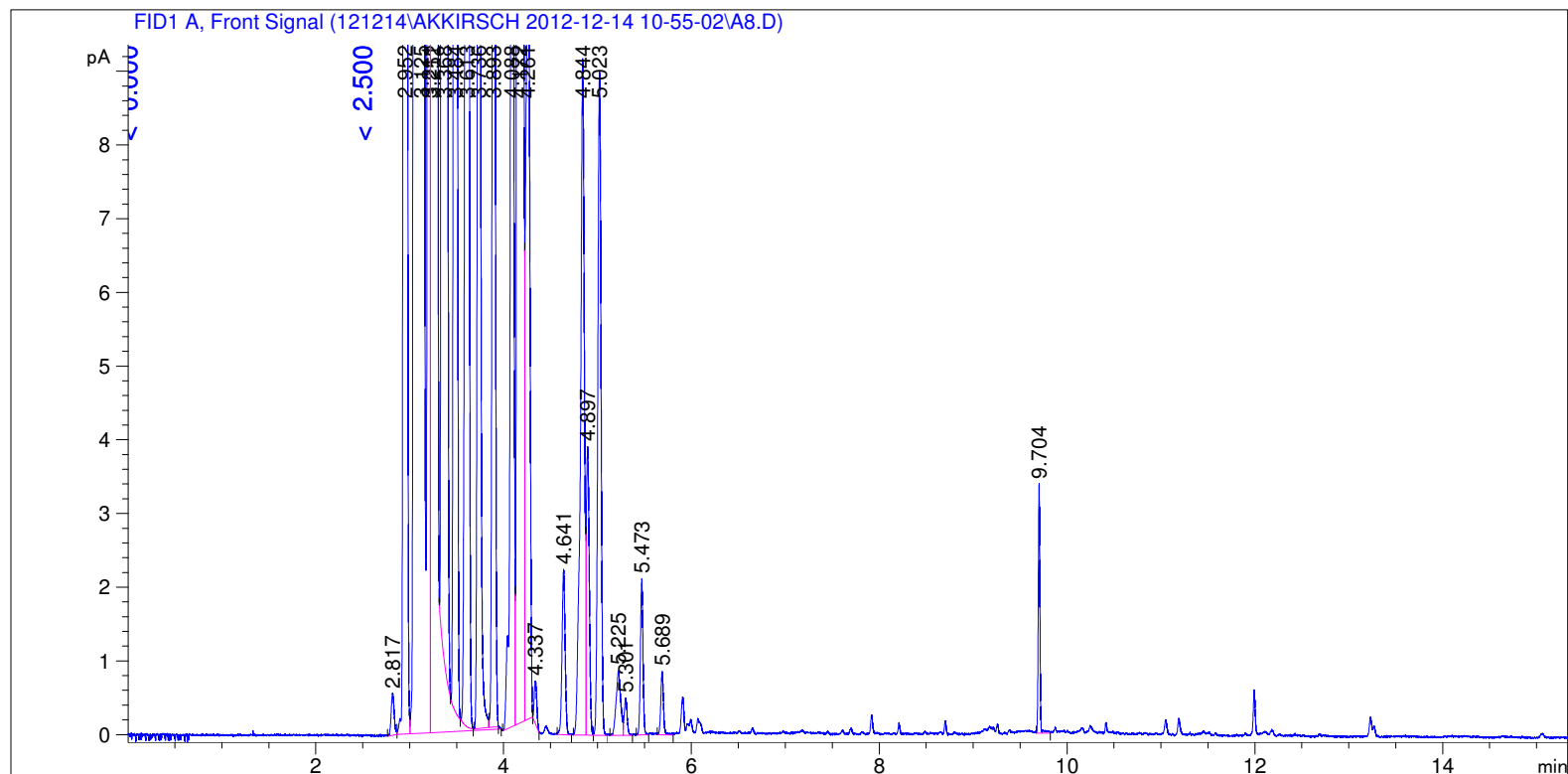


```

=====
Acq. Operator   : SYSTEM                      Seq. Line :    8
Acq. Instrument : GC FID                     Location  : Vial 108
Injection Date  : 12/14/2012 1:16:34 PM      Inj       :    1
                                           Inj Volume: 0.5 µl

Acq. Method    : C:\CHEM32\1\DATA\121214\AKKIRSCH 2012-12-14 10-55-02\LOW 40 AK.M
Last changed   : 12/14/2012 10:55:02 AM by SYSTEM
Analysis Method : C:\CHEM32\1\DATA\121214\AKKIRSCH 2012-12-14 10-55-02\LOW 40 AK.M (Sequence
Method)
Last changed   : 12/17/2012 8:20:25 AM by SYSTEM
                (modified after loading) (Current integration events modified)
Method Info    : 40 low
  
```



Area Percent Report

```

Sorted By           :      Retention Time
Calib. Data Modified :      Thursday, July 19, 2012 3:04:51 PM
Multiplier          :      1.0000
Dilution            :      1.0000
Do not use Multiplier & Dilution Factor with ISTDs
  
```

Signal 1: FID1 A, Front Signal

Peak #	RetTime [min]	Sig	Type	Area [pA*s]	Area %	Name
1	3.484	1	VV X	160.12914	0.29788	C12
2	3.893	1	VB T	46.61432	0.08671	C13
3	4.172	1	VV	1920.43237	3.57247	C14
4	4.521	1		0.00000	0.00000	C15

Totals : 2127.17583

Uncalibrated Peaks:

Peak #	RetTime [min]	Sig	Type	Area [pA*s]	Area %	Name
1	2.817	1	BV	1.26843	0.00236	?
2	2.952	1	VV	416.03937	0.77393	?
3	3.125	1	VV S	3.22548e4	60.00174	?
4	3.211	1	BV T	113.25789	0.21069	?
5	3.252	1	VB S	1.51738e4	28.22698	?
6	3.368	1	BV X	3354.34424	6.23989	?
7	3.613	1	VV X	99.28429	0.18469	?
8	3.736	1	VV T	58.23137	0.10832	?
9	4.088	1	BV	48.96131	0.09108	?
10	4.261	1	VB	32.49394	0.06045	?
11	4.337	1	BB	1.04852	0.00195	?
12	4.641	1	BB	5.18620	0.00965	?
13	4.844	1	BV	26.36563	0.04905	?
14	4.897	1	VV	8.70595	0.01620	?
15	5.023	1	VB	21.49194	0.03998	?
16	5.225	1	BV	2.96605	0.00552	?
17	5.301	1	VB	1.10292	0.00205	?
18	5.473	1	BB	4.04734	0.00753	?
19	5.689	1	BB	1.72846	0.00322	?
20	9.704	1	BB	4.12879	0.00768	?

Uncalib. totals : 5.16293e4

1 Warnings or Errors :

Warning : Calibrated compound(s) not found

=====
Summed Peaks Report
=====

=====
Final Summed Peaks Report
=====

Name	Total Area [pA*s]	Area %
C12	160.12914	0.2979
C13	46.61432	0.0867
C14	1920.43237	3.5725
C15	0.00000	0.0000

Totals : 3.9571

*** End of Report ***