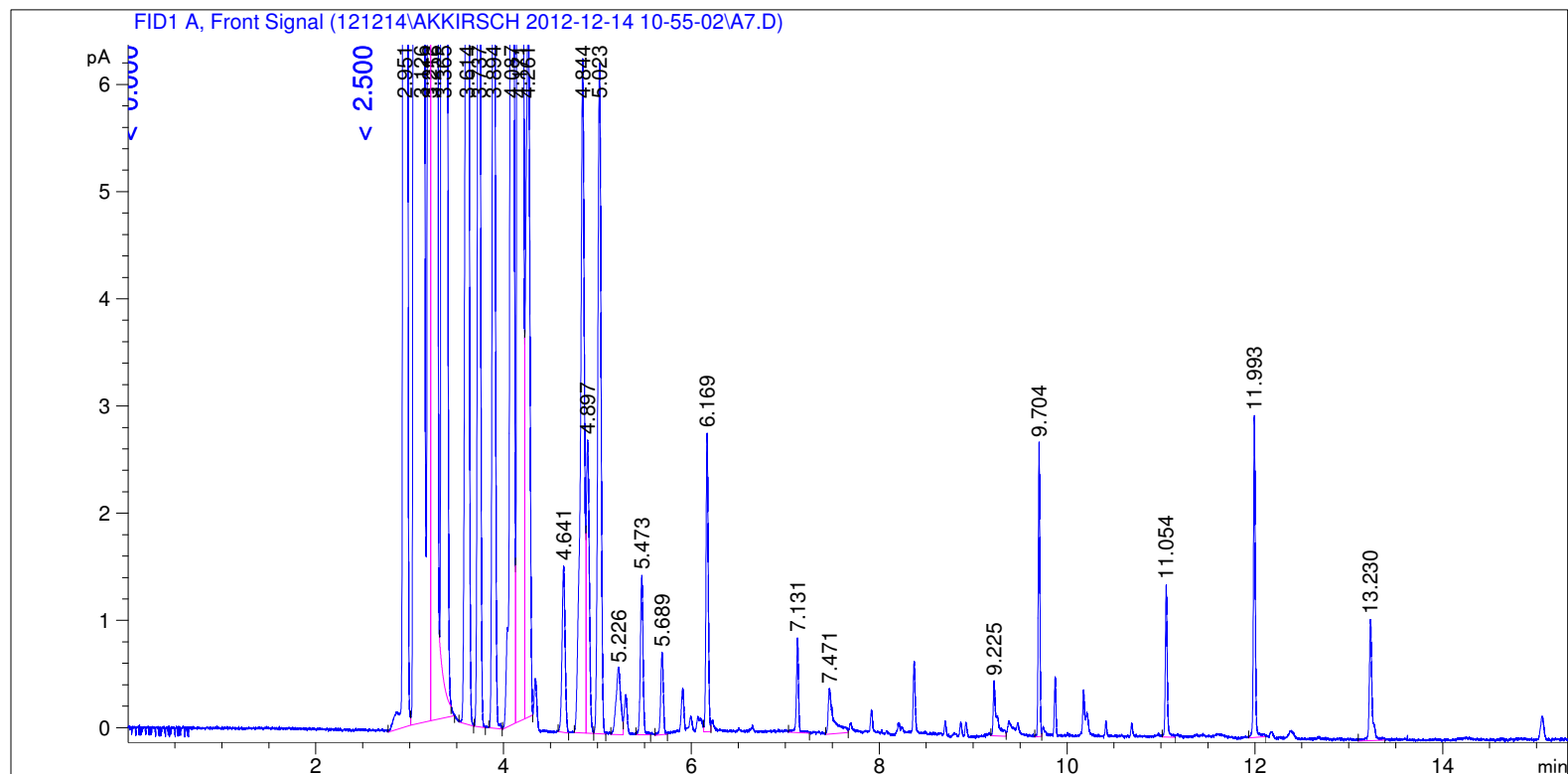


```

=====
Acq. Operator   : SYSTEM                      Seq. Line :    7
Acq. Instrument : GC FID                     Location  : Vial 107
Injection Date  : 12/14/2012 12:56:49 PM     Inj       :    1
                                           Inj Volume: 0.5 µl

Acq. Method    : C:\CHEM32\1\DATA\121214\AKKIRSCH 2012-12-14 10-55-02\LOW 40 AK.M
Last changed   : 12/14/2012 10:55:02 AM by SYSTEM
Analysis Method: C:\CHEM32\1\DATA\121214\AKKIRSCH 2012-12-14 10-55-02\LOW 40 AK.M (Sequence
Method)
Last changed   : 12/17/2012 8:19:54 AM by SYSTEM
                (modified after loading) (Current integration events modified)
Method Info    : 40 low
  
```



=====
 Area Percent Report
 =====

```

Sorted By           :      Retention Time
Calib. Data Modified :      Thursday, July 19, 2012 3:04:51 PM
Multiplier          :      1.0000
Dilution            :      1.0000
Do not use Multiplier & Dilution Factor with ISTDs
  
```

Signal 1: FID1 A, Front Signal

Peak #	RetTime [min]	Sig	Type	Area [pA*s]	Area %	Name
1	3.502	1		0.00000	0.00000	C12
2	3.894	1	BB	24.60994	0.05530	C13
3	4.171	1	VV	841.51593	1.89088	C14
4	4.521	1		0.00000	0.00000	C15

Totals : 866.12587

Uncalibrated Peaks:

Peak #	RetTime [min]	Sig	Type	Area [pA*s]	Area %	Name
1	2.951	1	BV	630.86188	1.41754	?
2	3.126	1	VV S	3.21065e4	72.14306	?
3	3.212	1	BV T	117.00290	0.26290	?
4	3.256	1	VB S	8611.42090	19.34979	?
5	3.365	1	BB X	1945.55359	4.37164	?
6	3.614	1	BB	46.56999	0.10464	?
7	3.737	1	BB	28.59708	0.06426	?
8	4.087	1	BV	61.38950	0.13794	?
9	4.261	1	VB	19.87312	0.04465	?
10	4.641	1	BB	3.53919	0.00795	?
11	4.844	1	BV	17.93421	0.04030	?
12	4.897	1	VB	6.16832	0.01386	?
13	5.023	1	BB	15.01529	0.03374	?
14	5.226	1	BV	2.16654	0.00487	?
15	5.473	1	BB	2.94855	0.00663	?
16	5.689	1	BB	1.49663	0.00336	?
17	6.169	1	VV	4.65132	0.01045	?
18	7.131	1	BB	1.42834	0.00321	?
19	7.471	1	BV	1.67928	0.00377	?
20	9.225	1	BV	1.29936	0.00292	?
21	9.704	1	BV	3.26723	0.00734	?
22	11.054	1	BB	1.98973	0.00447	?
23	11.993	1	BB	4.12598	0.00927	?
24	13.230	1	BB	2.33570	0.00525	?

Uncalib. totals : 4.36378e4

1 Warnings or Errors :

Warning : Calibrated compound(s) not found

Summed Peaks Report

Final Summed Peaks Report

Name	Total Area [pA*s]	Area %
C12	0.00000	0.0000
C13	24.60994	0.0553
C14	841.51593	1.8909
C15	0.00000	0.0000

Totals : 1.9462

*** End of Report ***