

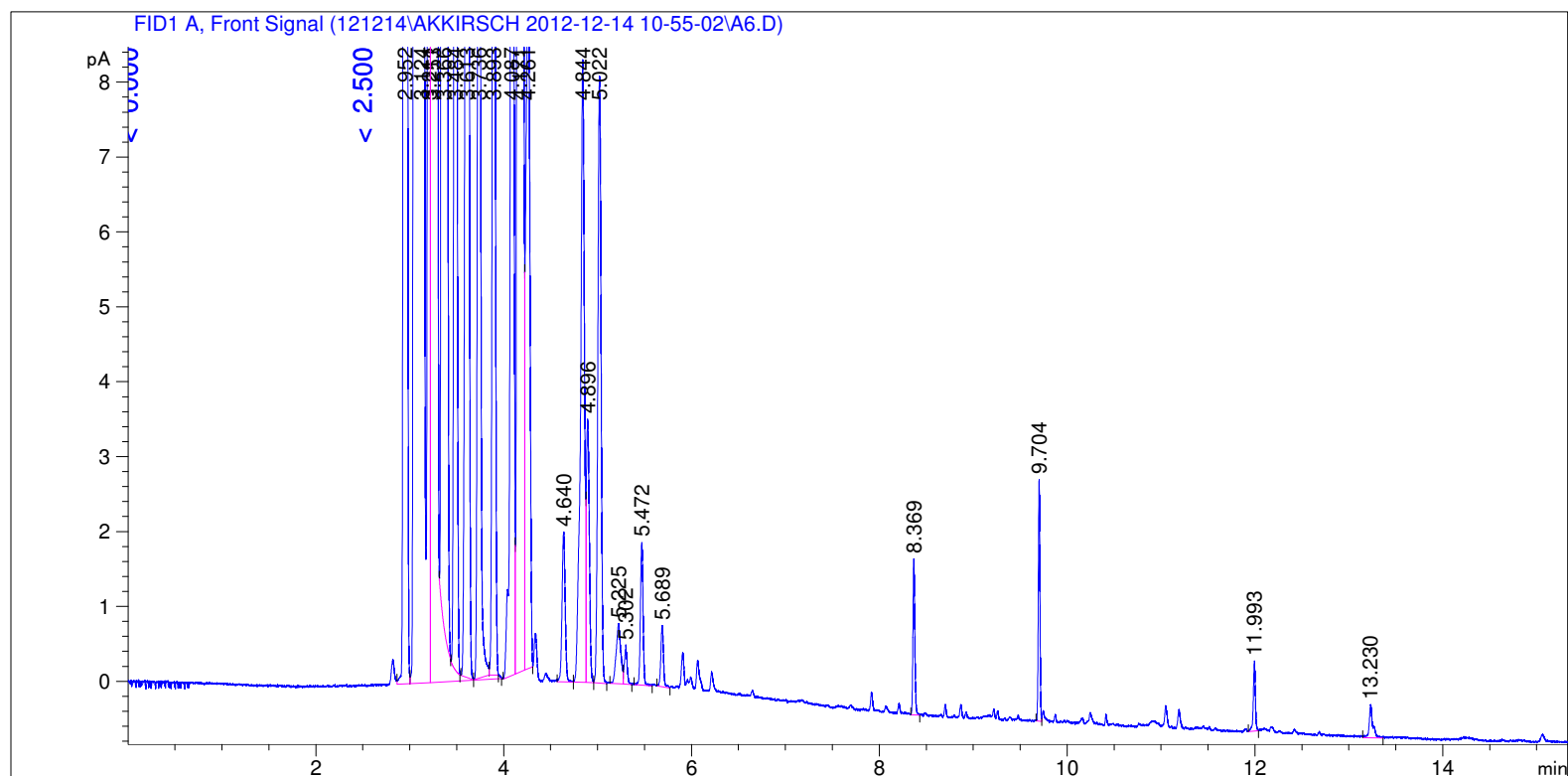
Sample Name: A6

```

=====
Acq. Operator   : SYSTEM                      Seq. Line :    6
Acq. Instrument : GC FID                      Location  : Vial 106
Injection Date  : 12/14/2012 12:37:03 PM      Inj       :    1
                                           Inj Volume: 0.5 µl

Acq. Method     : C:\CHEM32\1\DATA\121214\AKKIRSCH 2012-12-14 10-55-02\LOW 40 AK.M
Last changed    : 12/14/2012 10:55:02 AM by SYSTEM
Analysis Method : C:\CHEM32\1\DATA\121214\AKKIRSCH 2012-12-14 10-55-02\LOW 40 AK.M (Sequence
Method)
Last changed    : 12/17/2012 8:19:27 AM by SYSTEM
                 (modified after loading) (Current integration events modified)
Method Info     : 40 low
=====

```



```

=====
                          Area Percent Report
=====

```

```

Sorted By           :      Retention Time
Calib. Data Modified :      Thursday, July 19, 2012 3:04:51 PM
Multiplier          :      1.0000
Dilution            :      1.0000
Do not use Multiplier & Dilution Factor with ISTDs

```

Signal 1: FID1 A, Front Signal

Peak #	RetTime [min]	Sig	Type	Area [pA*s]	Area %	Name
1	3.484	1	VV X	58.38869	0.11462	C12
2	3.893	1	VB T	38.96304	0.07649	C13
3	4.171	1	VV	1605.04541	3.15091	C14
4	4.521	1		0.00000	0.00000	C15

Totals : 1702.39714

Uncalibrated Peaks:

Peak #	RetTime [min]	Sig	Type	Area [pA*s]	Area %	Name
1	2.952	1	VV	404.46359	0.79401	?
2	3.124	1	VV S	3.12564e4	61.36016	?
3	3.211	1	BV T	90.21912	0.17711	?
4	3.253	1	VB S	1.40683e4	27.61793	?
5	3.366	1	BV X	3134.23145	6.15289	?
6	3.613	1	VV T	78.96358	0.15502	?
7	3.736	1	VV T	47.24348	0.09274	?
8	4.087	1	BV	54.73405	0.10745	?
9	4.261	1	VB	28.12732	0.05522	?
10	4.640	1	BB	4.66577	0.00916	?
11	4.844	1	BV	23.71100	0.04655	?
12	4.896	1	VB	7.88992	0.01549	?
13	5.022	1	BB	19.43703	0.03816	?
14	5.225	1	BV	2.71425	0.00533	?
15	5.302	1	VB	1.01332	0.00199	?
16	5.472	1	BB	3.74246	0.00735	?
17	5.689	1	BB	1.59535	0.00313	?
18	8.369	1	BB	2.88725	0.00567	?
19	9.704	1	BV	3.82703	0.00751	?
20	11.993	1	BB	1.43146	0.00281	?
21	13.230	1	BB	1.17700	0.00231	?

Uncalib. totals : 4.92368e4

1 Warnings or Errors :

Warning : Calibrated compound(s) not found

=====  
Summed Peaks Report  
=====

=====  
Final Summed Peaks Report  
=====

Name	Total Area [pA*s]	Area %
C12	58.38869	0.1146
C13	38.96304	0.0765
C14	1605.04541	3.1509
C15	0.00000	0.0000

Totals : 3.3420

\*\*\* End of Report \*\*\*