

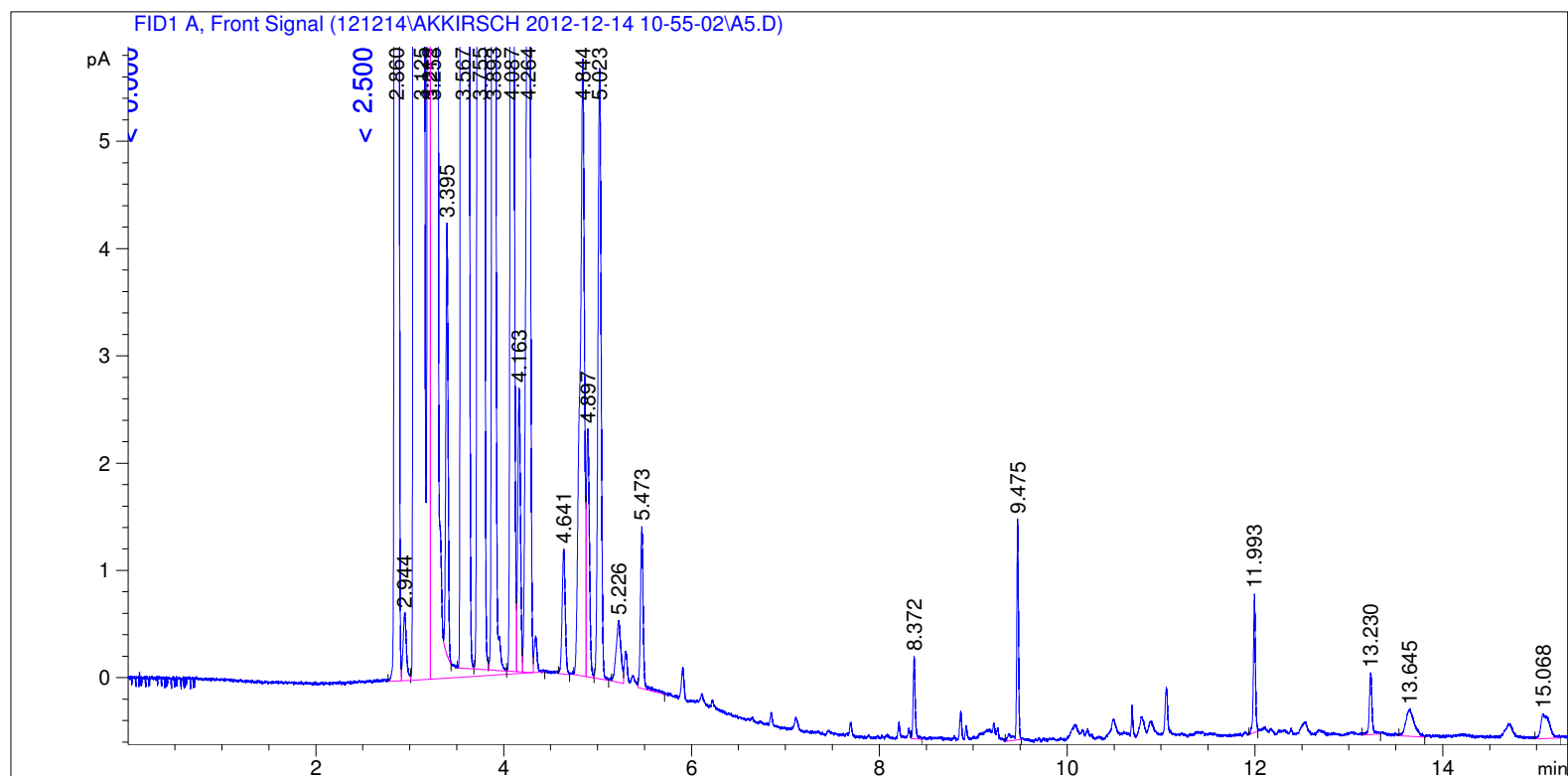
Sample Name: A5

```

=====
Acq. Operator   : SYSTEM                      Seq. Line :    5
Acq. Instrument : GC FID                      Location  : Vial 105
Injection Date  : 12/14/2012 12:17:17 PM      Inj       :    1
                                           Inj Volume: 0.5 µl

Acq. Method    : C:\CHEM32\1\DATA\121214\AKKIRSCH 2012-12-14 10-55-02\LOW 40 AK.M
Last changed   : 12/14/2012 10:55:02 AM by SYSTEM
Analysis Method: C:\CHEM32\1\DATA\121214\AKKIRSCH 2012-12-14 10-55-02\LOW 40 AK.M (Sequence
Method)
Last changed   : 12/17/2012 8:18:55 AM by SYSTEM
                (modified after loading) (Current integration events modified)
Method Info    : 40 low
=====

```



```

=====
                          Area Percent Report
=====

```

```

Sorted By           :      Retention Time
Calib. Data Modified :      Thursday, July 19, 2012 3:04:51 PM
Multiplier          :      1.0000
Dilution            :      1.0000
Do not use Multiplier & Dilution Factor with ISTDs

```

Signal 1: FID1 A, Front Signal

Peak #	RetTime [min]	Sig	Type	Area [pA*s]	Area %	Name
1	3.567	1	VV X	1188.26501	2.37604	C12
2	3.893	1	VV X	70.69559	0.14136	C13
3	4.163	1	VV X	5.37925	0.01076	C14
4	4.521	1		0.00000	0.00000	C15

```
Totals :                      1264.33986
```

Uncalibrated Peaks:

Peak #	RetTime [min]	Sig	Type	Area [pA*s]	Area %	Name
1	2.860	1	BV	424.59332	0.84901	?
2	2.944	1	VV	1.58350	0.00317	?
3	3.125	1	VV S	3.17004e4	63.38778	?
4	3.212	1	BV T	76.36519	0.15270	?
5	3.253	1	VB S	1.38536e4	27.70146	?
6	3.395	1	BV X	6.62329	0.01324	?
7	3.755	1	VV X	2541.61060	5.08217	?
8	4.087	1	VV X	52.01256	0.10400	?
9	4.264	1	VV X	33.64174	0.06727	?
10	4.641	1	BB	2.70409	0.00541	?
11	4.844	1	BV	18.84968	0.03769	?
12	4.897	1	VV	5.12227	0.01024	?
13	5.023	1	VB	13.61003	0.02721	?
14	5.226	1	BV	1.99566	0.00399	?
15	5.473	1	VB	3.17977	0.00636	?
16	8.372	1	VB	1.14663	0.00229	?
17	9.475	1	BB	2.81649	0.00563	?
18	11.993	1	BB	1.90960	0.00382	?
19	13.230	1	BB	1.17332	0.00235	?
20	13.645	1	BB	1.57328	0.00315	?
21	15.068	1	BB	1.45135	0.00290	?

Uncalib. totals : 4.87460e4

1 Warnings or Errors :

Warning : Calibrated compound(s) not found

Summed Peaks Report

Final Summed Peaks Report

Name	Total Area [pA*s]	Area %
C12	1188.26501	2.3760
C13	70.69559	0.1414
C14	5.37925	0.0108
C15	0.00000	0.0000

Totals : 2.5282

*** End of Report ***