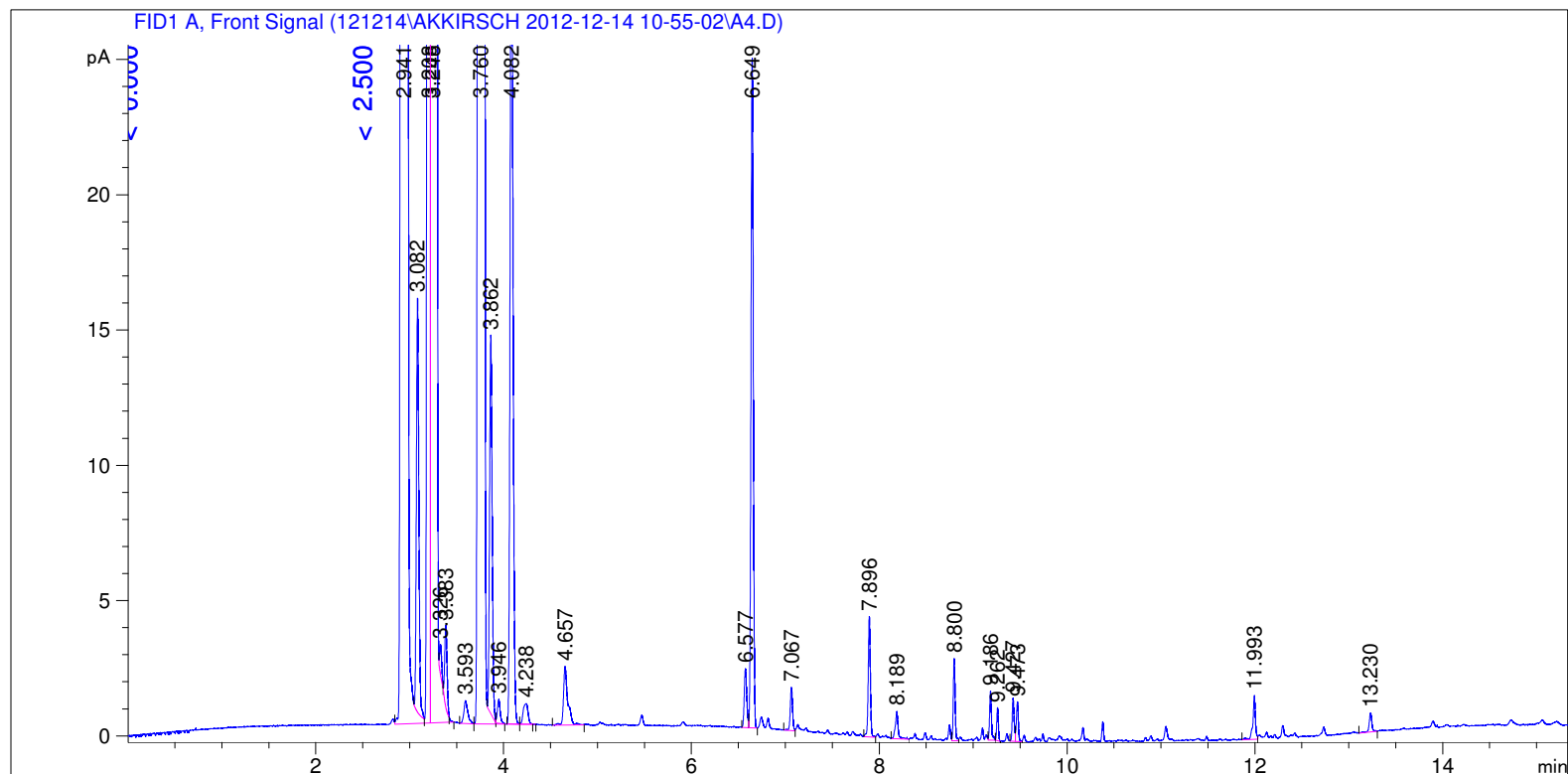


```

=====
Acq. Operator   : SYSTEM                      Seq. Line :    4
Acq. Instrument : GC FID                      Location  : Vial 104
Injection Date  : 12/14/2012 11:57:33 AM      Inj       :    1
                                           Inj Volume: 0.5 µl

Acq. Method     : C:\CHEM32\1\DATA\121214\AKKIRSCH 2012-12-14 10-55-02\LOW 40 AK.M
Last changed    : 12/14/2012 10:55:02 AM by SYSTEM
Analysis Method : C:\CHEM32\1\DATA\121214\AKKIRSCH 2012-12-14 10-55-02\LOW 40 AK.M (Sequence
Method)
Last changed    : 12/17/2012 8:18:03 AM by SYSTEM
                 (modified after loading) (Current integration events modified)
Method Info     : 40 low
  
```



=====
 Area Percent Report
 =====

```

Sorted By           :      Retention Time
Calib. Data Modified :      Thursday, July 19, 2012 3:04:51 PM
Multiplier          :      1.0000
Dilution            :      1.0000
Do not use Multiplier & Dilution Factor with ISTDs
  
```

Signal 1: FID1 A, Front Signal

Peak #	RetTime [min]	Sig	Type	Area [pA*s]	Area %	Name
1	3.502	1		0.00000	0.00000	C12
2	3.862	1	BV T	27.09773	0.06181	C13
3	4.238	1	VB T	2.67698	0.00611	C14
4	4.521	1		0.00000	0.00000	C15

Totals : 29.77471

Uncalibrated Peaks:

Peak #	RetTime [min]	Sig	Type	Area [pA*s]	Area %	Name
1	2.941	1	VV S	1.56400e4	35.67655	?
2	3.082	1	BV X	27.87074	0.06358	?
3	3.208	1	VV T	598.91797	1.36620	?
4	3.248	1	VB S	1.75260e4	39.97883	?
5	3.326	1	BV X	1.56250	0.00356	?
6	3.383	1	VB X	5.05385	0.01153	?
7	3.593	1	BV	2.45013	0.00559	?
8	3.760	1	VB S	9851.42676	22.47221	?
9	3.946	1	VV T	1.79515	0.00409	?
10	4.082	1	PV T	70.74814	0.16138	?
11	4.657	1	BB	7.00734	0.01598	?
12	6.577	1	BV	4.00793	0.00914	?
13	6.649	1	VB	42.73071	0.09747	?
14	7.067	1	BV	2.72358	0.00621	?
15	7.896	1	BV	7.10556	0.01621	?
16	8.189	1	BB	2.09956	0.00479	?
17	8.800	1	VV	4.11710	0.00939	?
18	9.186	1	VB	2.56210	0.00584	?
19	9.262	1	BB	1.41542	0.00323	?
20	9.427	1	BV	2.20424	0.00503	?
21	9.473	1	VV	2.14688	0.00490	?
22	11.993	1	BV	3.11182	0.00710	?
23	13.230	1	BB	1.42529	0.00325	?

Uncalib. totals : 4.38085e4

1 Warnings or Errors :

Warning : Calibrated compound(s) not found

Summed Peaks Report

Final Summed Peaks Report

Name	Total Area [pA*s]	Area %
C12	0.00000	0.0000
C13	27.09773	0.0618
C14	2.67698	6.106e-3
C15	0.00000	0.0000

Totals : 6.7919e-2

*** End of Report ***