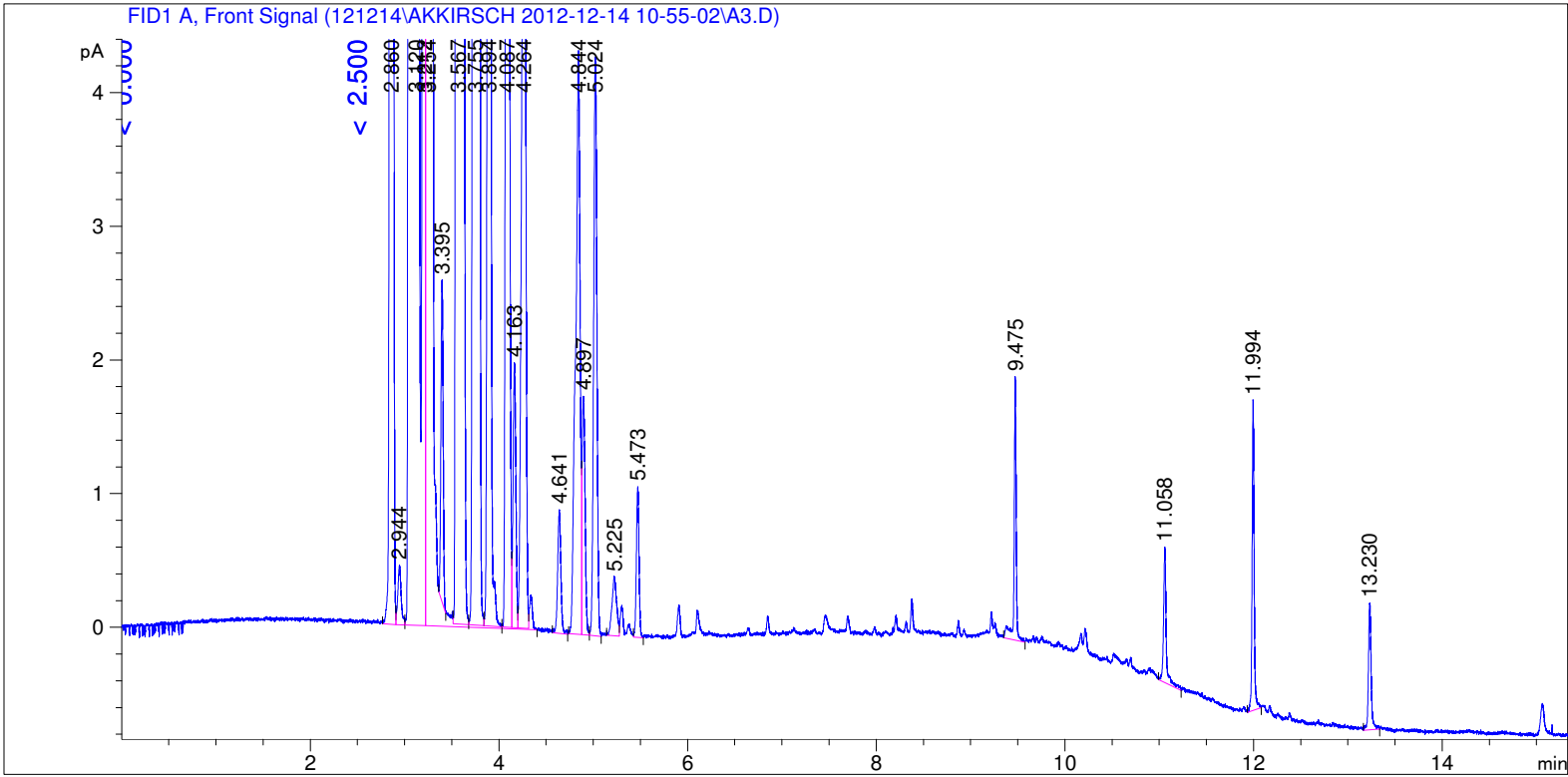


=====  
Acq. Operator : SYSTEM Seq. Line : 3  
Acq. Instrument : GC FID Location : Vial 103  
Injection Date : 12/14/2012 11:37:47 AM Inj : 1  
Inj Volume : 0.5 µl  
Acq. Method : C:\CHEM32\1\DATA\121214\AKKIRSCH 2012-12-14 10-55-02\LOW 40 AK.M  
Last changed : 12/14/2012 10:55:02 AM by SYSTEM  
Analysis Method : C:\CHEM32\1\DATA\121214\AKKIRSCH 2012-12-14 10-55-02\LOW 40 AK.M (Sequence Method)  
Last changed : 12/17/2012 8:16:53 AM by SYSTEM  
(modified after loading) (Current integration events modified)  
Method Info : 40 low



=====  
Area Percent Report  
=====

Sorted By : Retention Time  
Calib. Data Modified : Thursday, July 19, 2012 3:04:51 PM  
Multiplier : 1.0000  
Dilution : 1.0000  
Do not use Multiplier & Dilution Factor with ISTDs

Signal 1: FID1 A, Front Signal

Peak #	RetTime [min]	Sig	Type	Area [pA*s]	Area %	Name
1	3.567	1	VV T	1175.20349	2.66596	C12
2	3.894	1	VV T	47.18383	0.10704	C13
3	4.163	1	VV T	4.01263	0.00910	C14
4	4.521	1		0.00000	0.00000	C15

Totals : 1226.39995

Uncalibrated Peaks:

Peak #	RetTime [min]	Sig	Type	Area [pA*s]	Area %	Name
1	2.860	1	BV	180.17484	0.40873	?
2	2.944	1	VV	1.08604	0.00246	?
3	3.120	1	VV S	2.85618e4	64.79279	?
4	3.212	1	BV T	88.11156	0.19988	?
5	3.254	1	VB S	1.18349e4	26.84762	?
6	3.395	1	BV T	3.93494	0.00893	?
7	3.755	1	VV T	2068.19043	4.69171	?
8	4.087	1	VV T	47.89405	0.10865	?
9	4.264	1	VV T	24.28346	0.05509	?
10	4.641	1	BB	2.20266	0.00500	?
11	4.844	1	BV	14.26565	0.03236	?
12	4.897	1	VV	4.01647	0.00911	?
13	5.024	1	VB	10.41165	0.02362	?
14	5.225	1	BV	1.53128	0.00347	?
15	5.473	1	VB	2.20735	0.00501	?
16	9.475	1	BB	3.00441	0.00682	?
17	11.058	1	BB	1.97881	0.00449	?
18	11.994	1	BB	3.46772	0.00787	?
19	13.230	1	BB	1.89812	0.00431	?

Uncalib. totals : 4.28554e4

1 Warnings or Errors :

Warning : Calibrated compound(s) not found

=====  
Summed Peaks Report  
=====

=====  
Final Summed Peaks Report  
=====

Name	Total Area [pA*s]	Area %
C12	1175.20349	2.6660
C13	47.18383	0.1070
C14	4.01263	9.103e-3
C15	0.00000	0.0000

Totals : 2.7821

\*\*\* End of Report \*\*\*