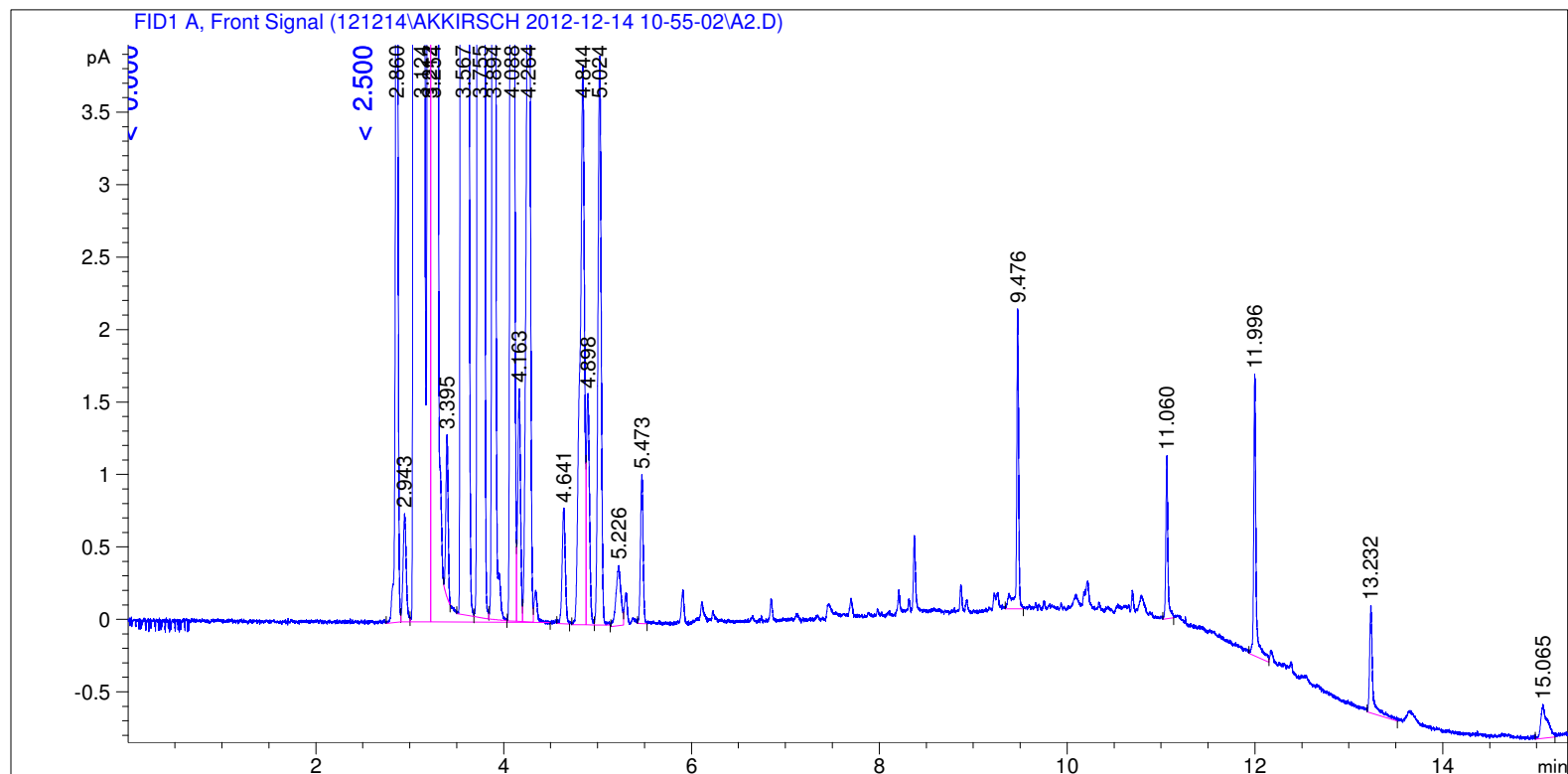


```

=====
Acq. Operator   : SYSTEM                      Seq. Line :    2
Acq. Instrument : GC FID                     Location  : Vial 102
Injection Date  : 12/14/2012 11:18:03 AM      Inj       :    1
                                           Inj Volume: 0.5 µl

Acq. Method    : C:\CHEM32\1\DATA\121214\AKKIRSCH 2012-12-14 10-55-02\LOW 40 AK.M
Last changed   : 12/14/2012 10:55:02 AM by SYSTEM
Analysis Method : C:\CHEM32\1\DATA\121214\AKKIRSCH 2012-12-14 10-55-02\LOW 40 AK.M (Sequence
Method)
Last changed   : 12/17/2012 7:54:54 AM by SYSTEM
                (modified after loading) (Current integration events modified)
Method Info    : 40 low
  
```



Area Percent Report

```

Sorted By           :      Retention Time
Calib. Data Modified :      Thursday, July 19, 2012 3:04:51 PM
Multiplier          :      1.0000
Dilution            :      1.0000
Do not use Multiplier & Dilution Factor with ISTDs
  
```

Signal 1: FID1 A, Front Signal

Peak #	RetTime [min]	Sig	Type	Area [pA*s]	Area %	Name
1	3.567	1	VV T	1304.41382	2.79147	C12
2	3.894	1	VV X	34.29647	0.07340	C13
3	4.163	1	VV T	3.24648	0.00695	C14
4	4.521	1		0.00000	0.00000	C15

Totals : 1341.95677

Uncalibrated Peaks:

Peak #	RetTime [min]	Sig	Type	Area [pA*s]	Area %	Name
1	2.860	1	BV	14.34620	0.03070	?
2	2.943	1	VV	1.73520	0.00371	?
3	3.124	1	VV S	3.07306e4	65.76407	?
4	3.212	1	BV T	92.12589	0.19715	?
5	3.254	1	VB S	1.28105e4	27.41470	?
6	3.395	1	BV X	1.85954	0.00398	?
7	3.755	1	VV X	1618.48267	3.46358	?
8	4.088	1	VV T	55.43678	0.11864	?
9	4.264	1	VV T	19.47690	0.04168	?
10	4.641	1	BB	1.88051	0.00402	?
11	4.844	1	BV	12.66005	0.02709	?
12	4.898	1	VV	3.60511	0.00771	?
13	5.024	1	VB	9.40834	0.02013	?
14	5.226	1	BV	1.48545	0.00318	?
15	5.473	1	BB	2.01351	0.00431	?
16	9.476	1	BB	3.14627	0.00673	?
17	11.060	1	BB	1.68092	0.00360	?
18	11.996	1	BV	3.28062	0.00702	?
19	13.232	1	BB	1.75908	0.00376	?
20	15.065	1	BB	1.12168	0.00240	?

Uncalib. totals : 4.53867e4

1 Warnings or Errors :

Warning : Calibrated compound(s) not found

=====
Summed Peaks Report
=====

=====
Final Summed Peaks Report
=====

Name	Total Area [pA*s]	Area %
C12	1304.41382	2.7915
C13	34.29647	0.0734
C14	3.24648	6.948e-3
C15	0.00000	0.0000

Totals : 2.8718

*** End of Report ***